

# HSV Mouse Monoclonal Antibody

Catalog No: #38056

Orders: [order@signalwayantibody.com](mailto:order@signalwayantibody.com)Support: [tech@signalwayantibody.com](mailto:tech@signalwayantibody.com)

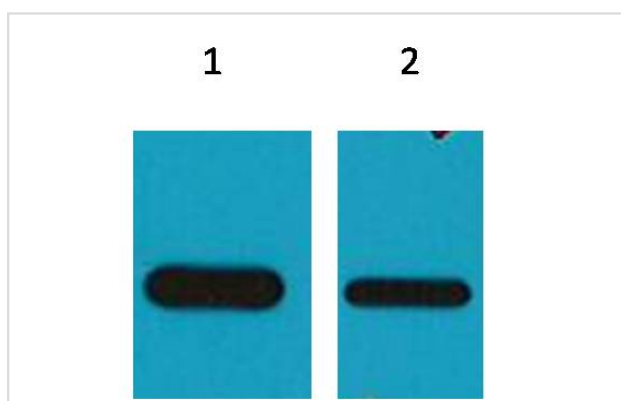
## Description

Product Name	HSV Mouse Monoclonal Antibody
Host Species	Mouse
Clonality	Monoclonal
Purification	Affinity purification using immunogen.
Applications	WB
Species Reactivity	N/A
Specificity	The HSV-tag antibody can recognize HSV tag fusion proteins.
Target Name	HSV
Other Names	HSRG1; HSV-1 stimulation-related gene 1 protein; HSV-1 stimulating-related protein; KIAA0872; MON1 homolog B (yeast)
Accession No.	Swiss-Prot#:Q7L1V2
SDS-PAGE MW	60kd
Concentration	1.0mg/ml
Formulation	Mouse IgG1 in phosphate buffered saline (without Mg <sup>2+</sup> and Ca <sup>2+</sup> ), pH 7.4, 150mM NaCl, 0.02% sodium azide and 50% glycerol.
Storage	Store at -20°C

## Application Details

Western blotting: 1:5000~1:10000

## Images



Western blot analysis of Recombinant protein, using #38056 diluted at 1) 1:5,000 2) 1:10,000

## Background

HSV-tag peptide QPELAPEDPED conjugated to KLH. HSV-Tag antibody can recognize C-terminal, internal, and N-terminal HSV-tagged proteins.

---

Note: This product is for in vitro research use only and is not intended for use in humans or animals.