

Alliinase Rabbit Polyclonal Antibody

Catalog No: #38042

Orders: order@signalwayantibody.comSupport: tech@signalwayantibody.com

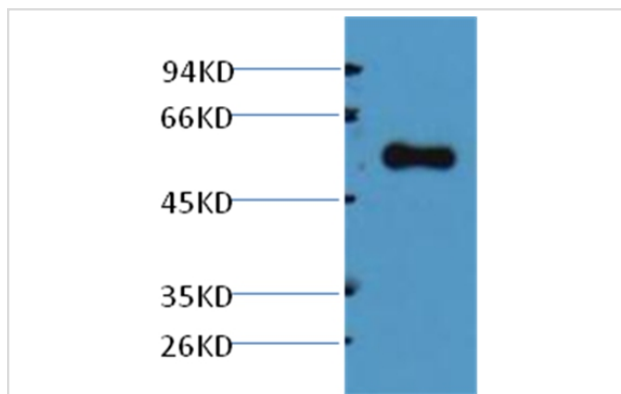
Description

Product Name	Alliinase Rabbit Polyclonal Antibody
Host Species	Rabbit
Clonality	Polyclonal
Purification	Affinity purification using immunogen.
Applications	WB
Species Reactivity	Allium sativum L
Specificity	Alliinase Rabbit Polyclonal antibody detects endogenous and recombinant Alliinase proteins.
Target Name	Alliinase
SDS-PAGE MW	56kd
Concentration	1.0mg/ml
Formulation	IgG1 in phosphate buffered saline (without Mg ²⁺ and Ca ²⁺), pH 7.4, 150mM NaCl, 0.02% sodium azide and 50% glycerol.
Storage	Store at -20°C

Application Details

Western blotting: 1:3000~1:5000

Images



Western blot analysis of purified alliinase, using #38042 diluted at 1:5,000

Background

Alliinase is responsible for catalyzing chemical reactions that produce the volatile chemicals that give these foods their flavors, odors, and tear-inducing properties. Alliinases are part of the plant's defense against herbivores. Alliinase is normally sequestered within a plant cell, but, when the plant is damaged by a feeding animal, the alliinase is released to catalyze the production of the pungent chemicals.

Note: This product is for in vitro research use only and is not intended for use in humans or animals.