

alpha Lactalbumin Mouse Monoclonal Antibody

Catalog No: #38041



Orders: order@signalwayantibody.com

Support: tech@signalwayantibody.com

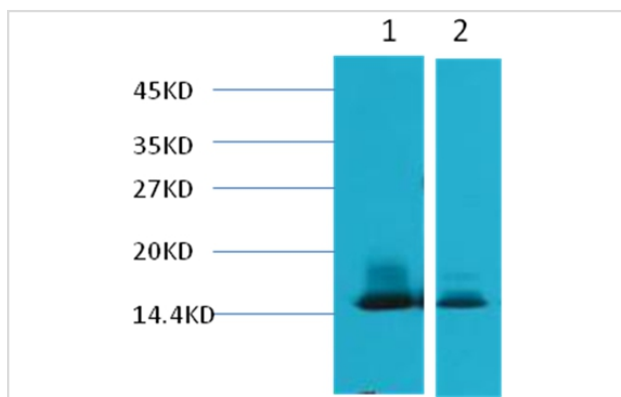
Description

Product Name	alpha Lactalbumin Mouse Monoclonal Antibody
Host Species	Mouse
Clonality	Monoclonal
Purification	Affinity purification using immunogen.
Applications	WB
Species Reactivity	Hu B
Specificity	alpha Lactalbumin Mouse Monoclonal antibody detects endogenous alpha Lactalbumin protein.s
Target Name	alpha Lactalbumin
Other Names	Lysozyme-like protein 5; LYZL5; SLLP-X; SPACA5; SPACA5A; SPACA5B; sperm acrosome associated 5B
Accession No.	Swiss-Prot#:Q96QH8
SDS-PAGE MW	18kd
Concentration	1.0mg/ml
Formulation	Mouse IgG1 in phosphate buffered saline (without Mg ²⁺ and Ca ²⁺), pH 7.4, 150mM NaCl, 0.02% sodium azide and 50% glycerol.
Storage	Store at -20°C

Application Details

Western blotting: 1:1000~1:3000

Images



Western blot analysis of 1) Human Milk, 2) Milk, using #38041 diluted at 1:3,000.

Background

In primates, alpha-lactalbumin expression is upregulated in response to the hormone prolactin and increases the production of lactose. α -Lactalbumin forms the regulatory subunit of the lactose synthase (LS) heterodimer and β -1,4-galactosyltransferase (beta4Gal-T1) forms the catalytic component.

Note: This product is for in vitro research use only and is not intended for use in humans or animals.