

Cytokeratin 6 Mouse Monoclonal Antibody

Catalog No: #38037

Orders: order@signalwayantibody.comSupport: tech@signalwayantibody.com

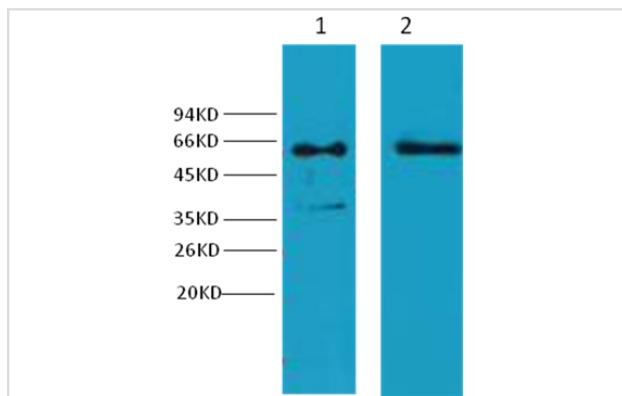
Description

Product Name	Cytokeratin 6 Mouse Monoclonal Antibody
Host Species	Mouse
Clonality	Monoclonal
Purification	Affinity purification using immunogen.
Applications	WB IHC
Species Reactivity	Hu
Specificity	Cytokeratin 6 Mouse Monoclonal antibody detects endogenous Cytokeratin 6 proteins.
Target Name	Cytokeratin 6
SDS-PAGE MW	46-58kd
Concentration	1.0mg/ml
Formulation	Mouse IgG1 in phosphate buffered saline (without Mg ²⁺ and Ca ²⁺), pH 7.4, 150mM NaCl, 0.02% sodium azide and 50% glycerol.
Storage	Store at -20°C

Application Details

Western blotting: 1:1000~1:2000

Images



Western blot analysis of 1) HeLa, 2) HepG2 , using #38037 diluted at 1:2,000.

Background

Cytokeratins are proteins of keratin-containing intermediate filaments found in the intracytoplasmic cytoskeleton of epithelial tissue.

Note: This product is for in vitro research use only and is not intended for use in humans or animals.