

## Ki 67 Mouse Monoclonal Antibody

Catalog No: #38019

Orders: [order@signalwayantibody.com](mailto:order@signalwayantibody.com)Support: [tech@signalwayantibody.com](mailto:tech@signalwayantibody.com)

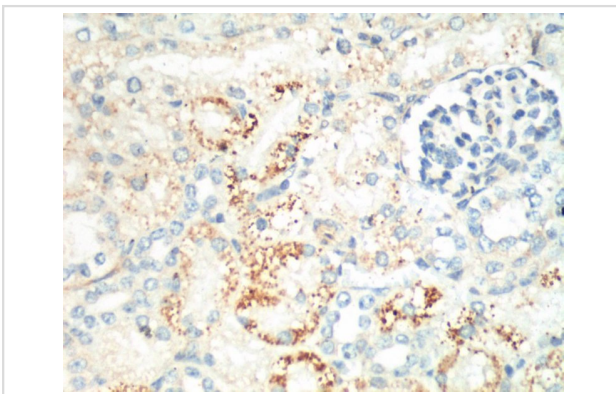
## Description

Product Name	Ki 67 Mouse Monoclonal Antibody
Host Species	Mouse
Clonality	Monoclonal
Clone No.	4A8
Purification	Affinity purification using immunogen.
Applications	IHC
Species Reactivity	Hu Ms Rt
Specificity	The Ki 67 Mouse Monoclonal antibody detects endogenous Ki 67 protein.s
Target Name	Ki 67
Other Names	antigen identified by monoclonal antibody Ki-67; Antigen KI-67; KI67; KIA; MKI67
Accession No.	Swiss-Prot#:P46013
Concentration	1.0mg/ml
Formulation	Mouse IgG1 in phosphate buffered saline (without Mg <sup>2+</sup> and Ca <sup>2+</sup> ), pH 7.4, 150mM NaCl, 0.02% sodium azide and 50% glycerol.
Storage	Store at -20°C

## Application Details

Immunohistochemistry: 1:200

## Images



IHC staining of Mouse Kidney tissue with Ki 67 mouse mAb(4A8) diluted at 1:200.

## Background

KI-67 is a nuclear protein that is associated with and may be necessary for cellular proliferation. Furthermore it is associated with ribosomal RNA transcription. Inactivation of antigen KI-67 leads to inhibition of ribosomal RNA synthesis. The Ki-67 protein (also known as MKI67) is a cellular marker for proliferation. It is strictly associated with cell proliferation. During interphase, the Ki-67 antigen can be exclusively detected within the cell nucleus, whereas in mitosis most of the protein is relocated to the surface of the chromosomes. Ki-67 protein is present during all active phases of the cell cycle (G1, S, G2, and mitosis), but is absent from resting cells (G0).

---

Note: This product is for in vitro research use only and is not intended for use in humans or animals.