

CD21 Mouse Monoclonal Antibody

Catalog No: #38015

Orders: order@signalwayantibody.comSupport: tech@signalwayantibody.com

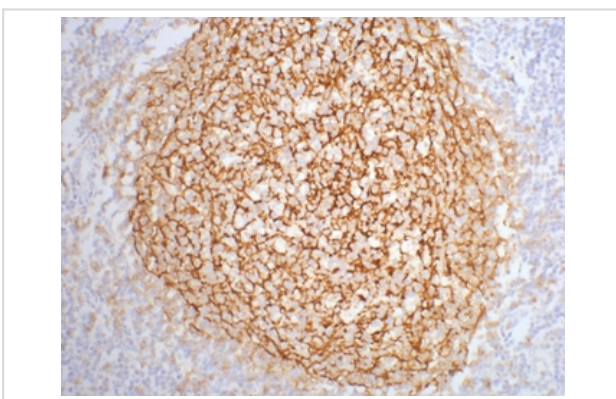
Description

Product Name	CD21 Mouse Monoclonal Antibody
Host Species	Mouse
Clonality	Monoclonal
Clone No.	2C5
Purification	Affinity purification using immunogen.
Applications	IHC
Species Reactivity	Hu Ms Rt
Specificity	The CD21 antibody detects endogenous CD21 proteins.
Target Name	CD21
Other Names	C3DR; CD21; Complement C3d receptor; complement component (3d/Epstein Barr virus) receptor 2
Accession No.	Swiss-Prot#:P20023
SDS-PAGE MW	113kd
Concentration	1.0mg/ml
Formulation	Mouse IgG1 in phosphate buffered saline (without Mg ²⁺ and Ca ²⁺), pH 7.4, 150mM NaCl, 0.02% sodium azide and 50% glycerol.
Storage	Store at -20°C

Application Details

Immunohistochemistry: 1:200

Images



IHC staining of human tonsil tissue with CD21 mouse mAb(2C5) diluted at 1:200.

Background

CD21 also known as complement receptor 2 (CR2), C3d receptor or EBV receptor is a 140 kDa protein. CD21 is a glycosylated type I transmembrane protein consisting of an extracellular face of a series of 15 or 16 CCP domains. CD21 is the receptor for complement components C3d and iC3b as well as the Epstein-Barr virus (EBV) glycoprotein gp350/220. The soluble CD21 (sCD21) was shown to efficiently trigger CD23 signalling pathways in human monocytes. By inducing release of proinflammatory cytokines and upregulating expression of molecules involved in antigen presentation, sCD21 modulates critical monocyte functions that may be relevant to allergic and inflammatory disorders.

Note: This product is for in vitro research use only and is not intended for use in humans or animals.