

Myosin Heavy Chain Mouse Monoclonal Antibody

Catalog No: #38013

Orders: order@signalwayantibody.comSupport: tech@signalwayantibody.com

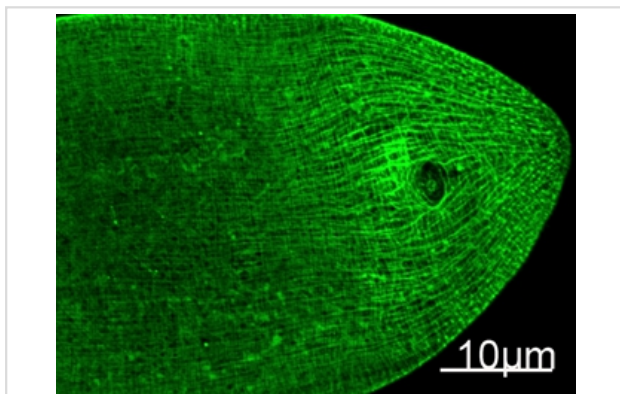
Description

Product Name	Myosin Heavy Chain Mouse Monoclonal Antibody
Host Species	Mouse
Clonality	Monoclonal
Purification	Affinity purification using immunogen.
Applications	IHC IF
Species Reactivity	Hu Ms Rt Fruit Fly Nematode
Specificity	The Myosin Heavy Chain Mouse Monoclonal antibody detects endogenous MHC proteins.
Target Name	Myosin Heavy Chain
SDS-PAGE MW	220kd
Concentration	1.0mg/ml
Formulation	Mouse IgG1 in phosphate buffered saline (without Mg ²⁺ and Ca ²⁺), pH 7.4, 150mM NaCl, 0.02% sodium azide and 50% glycerol.
Storage	Store at -20°C

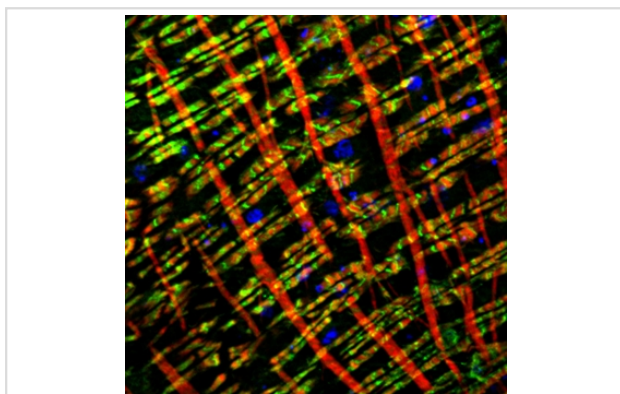
Application Details

Immunofluorescence: 1:100

Images



Immunofluorescence staining of nematode tissue with MYH mouse mAb(11C2) diluted at 1:100.



Immunofluorescence double staining of fruit fly tissue with MYH mouse mAb(11C2)(Green) and F-actin mouse mAb(red).

Background

Muscle myosin is a hexameric protein that consists of 2 heavy chain subunits (MHC), 2 alkali light chain subunits (MLC) and 2 regulatory light chain subunits (MLC-2). Cardiac MHC exists as two isoforms in humans, alpha-cardiac MHC and beta-cardiac MHC. These two isoforms are expressed in different amounts in the human heart. During normal physiology, beta-cardiac MHC is the predominant form, with the alpha-isoform contributing around only 7% of the total MHC. Mutations of the MHC genes are associated with several different dilated and hypertrophic cardiomyopathies.

Note: This product is for in vitro research use only and is not intended for use in humans or animals.