

CK16 Mouse Monoclonal Antibody

Catalog No: #38011

Orders: order@signalwayantibody.comSupport: tech@signalwayantibody.com

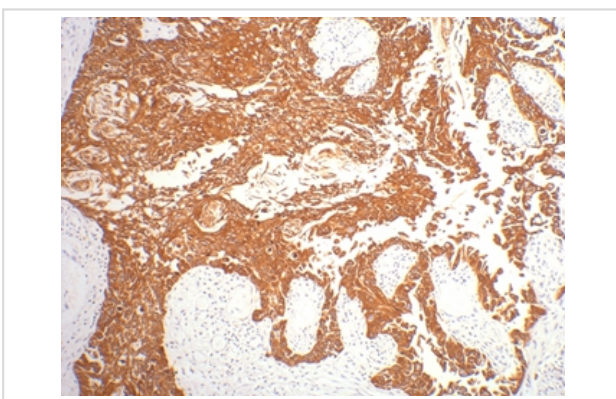
Description

Product Name	CK16 Mouse Monoclonal Antibody
Host Species	Mouse
Clonality	Monoclonal
Clone No.	6F6
Purification	Affinity purification using immunogen.
Applications	IHC
Species Reactivity	Hu Ms Rt
Specificity	The CK16 Mouse Monoclonal antibody detects endogenous CK16 proteins.
Target Name	CK16
Other Names	CK-16; CK16; cytokeratin 16; Cytokeratin-16; FNEPPK
Accession No.	Swiss-Prot#:P08779
SDS-PAGE MW	51kd
Concentration	1.0mg/ml
Formulation	Mouse IgG1 in phosphate buffered saline (without Mg ²⁺ and Ca ²⁺), pH 7.4, 150mM NaCl, 0.02% sodium azide and 50% glycerol.
Storage	Store at -20°C

Application Details

Immunohistochemistry: 1:200

Images



IHC staining of human gullet cancer tissue with CK16 mouse mAb(6F6) diluted at 1:200.

Background

Keratin 16 is expressed in keratinocytes, which are undergoing rapid turnover in the suprabasal region (also known as hyperproliferation-related keratins). Keratin 16 is absent in normal breast tissue and in noninvasive breast carcinomas. Only 10% of the invasive breast carcinomas show diffuse or focal positivity. Reportedly, a relatively high concordance was found between the carcinomas immunostaining with the basal cell and the hyperproliferation-related keratins, but not between these markers and the proliferation marker Ki-67. This supports the conclusion that basal cells in breast cancer may show extensive proliferation, and that absence of Ki-67 staining does not mean that (tumor) cells are not proliferating.

Note: This product is for in vitro research use only and is not intended for use in humans or animals.