

## CD68 Mouse Monoclonal Antibody

Catalog No: #38005

Orders: [order@signalwayantibody.com](mailto:order@signalwayantibody.com)Support: [tech@signalwayantibody.com](mailto:tech@signalwayantibody.com)

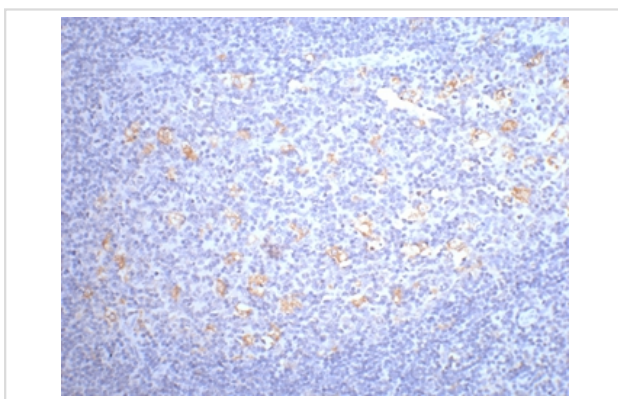
## Description

Product Name	CD68 Mouse Monoclonal Antibody
Host Species	Mouse
Clonality	Monoclonal
Clone No.	6F3
Purification	Affinity purification using immunogen.
Applications	IHC
Species Reactivity	Hu Ms Rt
Specificity	The CD68 antibody detects endogenous CD68 proteins.
Target Name	CD68
Other Names	CD68; CD68 antigen; CD68 molecule; DKFZp686M18236; Gp110; macrophage antigen CD68
Accession No.	Swiss-Prot#:P34810
SDS-PAGE MW	37kd
Concentration	1.0mg/ml
Formulation	Mouse IgG1 in phosphate buffered saline (without Mg <sup>2+</sup> and Ca <sup>2+</sup> ), pH 7.4, 150mM NaCl, 0.02% sodium azide and 50% glycerol.
Storage	Store at -20°C

## Application Details

Immunohistochemistry: 1:200

## Images



IHC staining of paraffin-embedded Human tonsil tissue CD68 mouse mAb(6F3) diluted at 1:200.

## Background

The CD68 antigen is a 37kD transmembrane protein that is post-translationally glycosylated to give a protein of 87-115kD. CD68 is specifically expressed by tissue macrophages, Langerhans cells and at low levels by dendritic cells. It could play a role in phagocytic activities of tissue macrophages, both in intracellular lysosomal metabolism and extracellular cell-cell and cell-pathogen interactions. It binds to tissue- and organ-specific lectins or selectins, allowing homing of macrophage subsets to particular sites. Rapid recirculation of CD68 from endosomes and lysosomes to the plasma membrane may allow macrophages to crawl over selectin bearing substrates or other cells.

---

Note: This product is for in vitro research use only and is not intended for use in humans or animals.