

CD23 Mouse Monoclonal Antibody

Catalog No: #38004

Orders: order@signalwayantibody.comSupport: tech@signalwayantibody.com

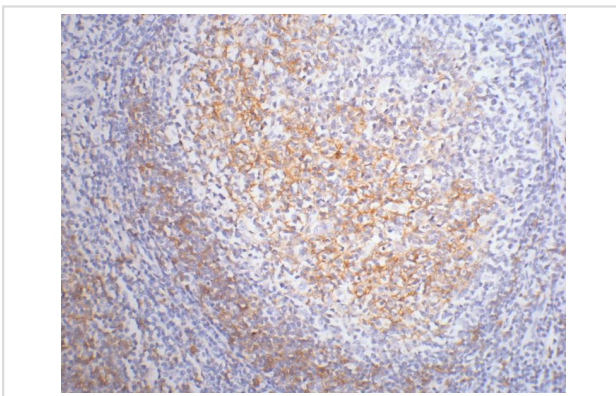
Description

Product Name	CD23 Mouse Monoclonal Antibody
Host Species	Mouse
Clonality	Monoclonal
Clone No.	1E9
Purification	Affinity purification using immunogen.
Applications	IHC
Species Reactivity	Hu Ms Rt
Specificity	The CD23 antibody detects endogenous CD23 proteins.
Target Name	CD23
Other Names	Fc fragment of IgE, high affinity I, receptor for; Fc-epsilon RI-gamma; FCER1G; FCERG
Accession No.	Swiss-Prot#:P30273
SDS-PAGE MW	28,38,49kd
Concentration	1.0mg/ml
Formulation	Mouse IgG1 in phosphate buffered saline (without Mg ²⁺ and Ca ²⁺), pH 7.4, 150mM NaCl, 0.02% sodium azide and 50% glycerol.
Storage	Store at -20°C

Application Details

Immunohistochemistry: 1:200

Images



IHC staining of paraffin-embedded Human tonsil tissue with CD23 mouse mAbB£B~1E9B£B@diluted at 1:200.

Background

The CD23 antigen is the low affinity IgE Fc receptor, which is a 49 kDa protein with 38 and 28 kDa fragments. It is expressed on most mature, conventional B cells and can also be found on the surface of T cells, macrophages, platelets and EBV transformed B lymphoblasts. Expression of CD23 has been detected in neoplastic cells from cases of B cell chronic Lymphocytic leukemia. CD23 is expressed by B cells in the follicular mantle but not by proliferating germinal centre cells. CD23 is also expressed by eosinophils.

Note: This product is for in vitro research use only and is not intended for use in humans or animals.