

α-tubulin Mouse Monoclonal Antibody

Catalog No: #37981

Orders: order@signalwayantibody.comSupport: tech@signalwayantibody.com**Description**

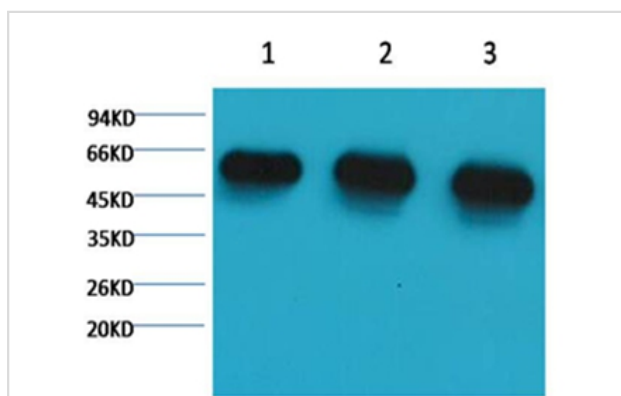
Product Name	α-tubulin Mouse Monoclonal Antibody
Host Species	Mouse
Clonality	Monoclonal
Purification	Affinity purification using immunogen.
Applications	WB IF IP
Species Reactivity	Hu Rt Ms
Specificity	The α -tubulin antibody can detects endogenous α -tubulin protein.
Target Name	α-tubulin
Other Names	alpha-tubulin N-acetyltransferase; ATAT1; C6orf134; CF134;
Accession No.	Swiss-Prot#:Q5SQI0
SDS-PAGE MW	52kd
Concentration	1.0mg/ml
Formulation	Mouse IgG1 in phosphate buffered saline (without Mg ²⁺ and Ca ²⁺), pH 7.4, 150mM NaCl, 0.02% sodium azide and 50% glycerol.
Storage	Store at -20°C

Application Details

Western blotting: 1:5000~1:10000

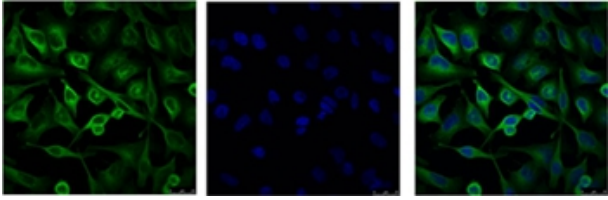
Immunofluorescence: 1:100~1:200

Immunoprecipitation: 1:200

Images

Western blot analysis of 1) Hela, 2) Rat Brain Tissue, 3) Mouse Brain Tissue, using #37981 diluted at 1:5,000.

IF analysis of HeLa cells with #37981 (Left) and DAPI (Right) diluted at 1:100.

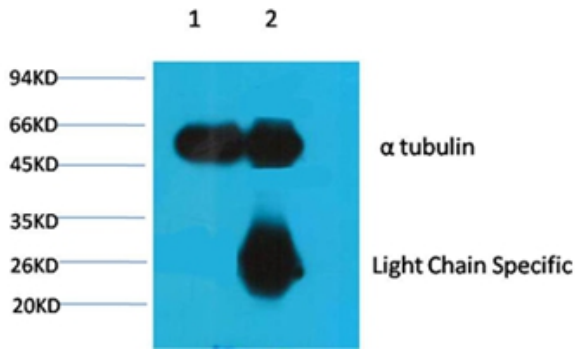


1B' Input: Mouse Brain Tissue Lysate

2B' IP product: IP dilute 1:200

Western blot analysis: primary antibody : #37981 1:5,000

Secondary antibody: Goat anti-Mouse IgG, Light chain specific, 1:5,000



Background

Tubulin is one of several members of a small family of globular proteins. The tubulin superfamily includes five distinct families, the alpha-, beta-, gamma-, delta-, and epsilon-tubulins. The most common members of the tubulin family are α -tubulin and β -tubulin, the proteins that make up microtubules. Each has a molecular weight of approximately 55 KD. Microtubules are assembled from dimers of α - and β -tubulin

Note: This product is for in vitro research use only and is not intended for use in humans or animals.