

FAIM Antibody

Catalog No: #37562

Orders: order@signalwayantibody.comSupport: tech@signalwayantibody.com

Description

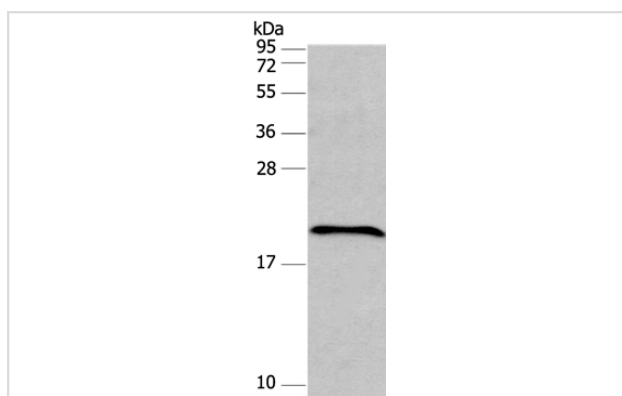
Product Name	FAIM Antibody
Host Species	Rabbit
Clonality	Polyclonal
Purification	Antigen affinity purification.
Applications	WB IHC
Species Reactivity	Hu
Specificity	The antibody detects endogenous levels of total FAIM protein.
Immunogen Type	Peptide
Immunogen Description	Synthetic peptide corresponding to a region derived from internal residues of human Fas apoptotic inhibitory molecule
Target Name	FAIM
Other Names	FAIM1
Accession No.	Swiss-Prot#: Q9NVQ4NCBI Gene ID: 55179Gene Accssion: NP_060617
SDS-PAGE MW	20kd
Concentration	2.7mg/ml
Formulation	Rabbit IgG in pH7.3 PBS, 0.05% NaN ₃ , 50% Glycerol.
Storage	Store at -20°C

Application Details

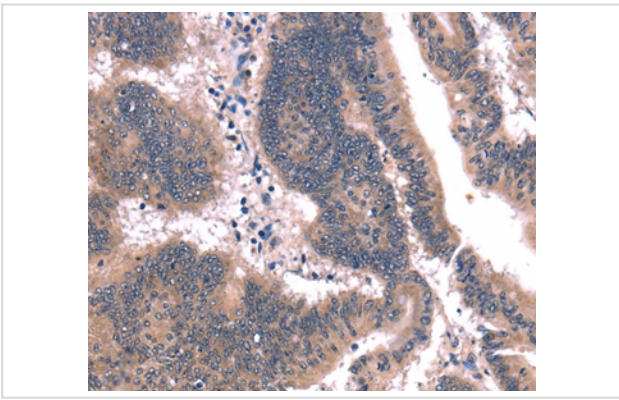
Western blotting: 1:200-1:1000

Immunohistochemistry: 1:25-1:100

Images



Gel: 10%SDS-PAGE
 Lysate: 40ug Raji cell
 Primary antibody: 1/200 dilution
 Secondary antibody dilution: 1/8000
 Exposure time: 15 seconds



Immunohistochemical analysis of paraffin-embedded Human colon cancer tissue using #37562 at dilution 1/25.

Background

The protein encoded by this gene protects against death receptor-triggered apoptosis and regulates B-cell signaling and differentiation. Several transcript variants encoding different isoforms have been found for this gene

Note: This product is for in vitro research use only and is not intended for use in humans or animals.