

## ARSB Antibody

Catalog No: #37428

Orders: [order@signalwayantibody.com](mailto:order@signalwayantibody.com)Support: [tech@signalwayantibody.com](mailto:tech@signalwayantibody.com)

## Description

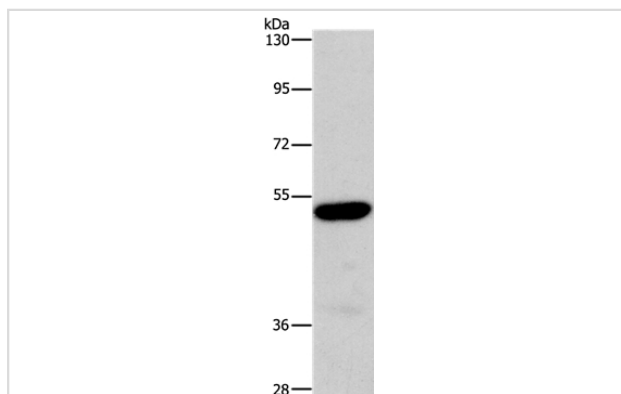
Product Name	ARSB Antibody
Host Species	Rabbit
Clonality	Polyclonal
Purification	Antigen affinity purification.
Applications	WB IHC
Species Reactivity	Hu
Specificity	The antibody detects endogenous levels of total ARSB protein.
Immunogen Type	Peptide
Immunogen Description	Synthetic peptide corresponding to a region derived from internal residues of human arylsulfatase B
Target Name	ARSB
Other Names	ASB; G4S; MPS6
Accession No.	Swiss-Prot#: P15848NCBI Gene ID: 411Gene Accssion: NP_000037
SDS-PAGE MW	60kd
Concentration	3.4mg/ml
Formulation	Rabbit IgG in pH7.3 PBS, 0.05% NaN <sub>3</sub> , 50% Glycerol.
Storage	Store at -20°C

## Application Details

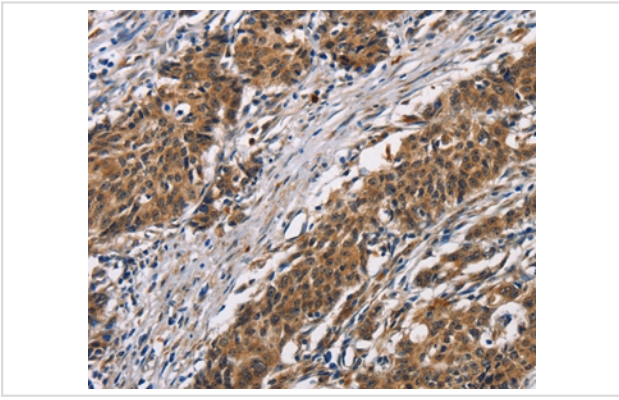
Western blotting: 1:200-1:1000

Immunohistochemistry: 1:50-1:200

## Images



Gel: 6%SDS-PAGE  
 Lysates (from left to right): Human fetal liver tissue  
 Amount of lysate: 40ug per lane  
 Primary antibody: 1/340 dilution  
 Secondary antibody dilution: 1/8000  
 Exposure time: 10 minutes



Immunohistochemical analysis of paraffin-embedded Human gastric cancer tissue using #37428 at dilution 1/50.

## Background

Arylsulfatase B encoded by this gene belongs to the sulfatase family. The arylsulfatase B homodimer hydrolyzes sulfate groups of N-Acetyl-D-galactosamine, chondroitin sulfate, and dermatan sulfate. The protein is targeted to the lysosome. Mucopolysaccharidosis type VI is an autosomal recessive lysosomal storage disorder resulting from a deficiency of arylsulfatase B. Two alternatively spliced transcript variants encoding distinct isoforms have been found for this gene.

Note: This product is for in vitro research use only and is not intended for use in humans or animals.