

FOSB Antibody

Catalog No: #36855

Orders: order@signalwayantibody.comSupport: tech@signalwayantibody.com

Description

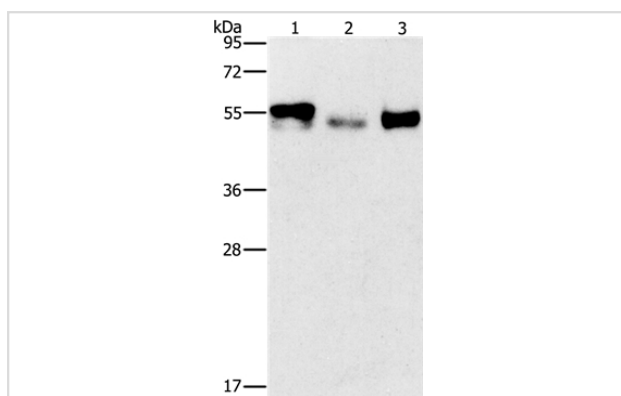
Product Name	FOSB Antibody
Host Species	Rabbit
Clonality	Polyclonal
Purification	Antigen affinity purification.
Applications	WB IHC
Species Reactivity	Hu
Specificity	The antibody detects endogenous levels of total FOSB protein.
Immunogen Type	Peptide
Immunogen Description	Synthetic peptide corresponding to residues near the C terminal of human FBJ murine osteosarcoma viral oncogene homolog B
Target Name	FOSB
Other Names	AP-1; G0S3; GOS3; GOSB
Accession No.	Swiss-Prot#: P53539NCBI Gene ID: 2354Gene Accssion: NP_006723/P53539
SDS-PAGE MW	36kd
Concentration	1.3mg/ml
Formulation	Rabbit IgG in pH7.3 PBS, 0.05% NaN ₃ , 50% Glycerol.
Storage	Store at -20°C

Application Details

Western blotting: 1:200-1:1000

Immunohistochemistry: 1:50-1:200

Images



Gel: 8%SDS-PAGE

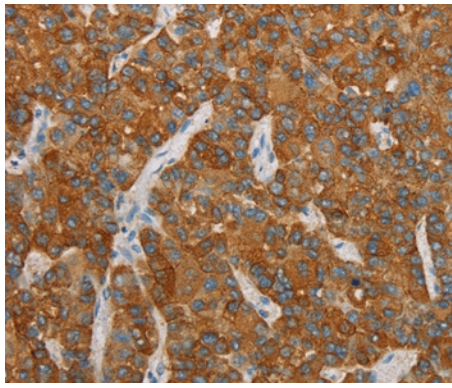
Lysates (from left to right): Human kidney cancer and lung cancer tissue, human placenta tissue

Amount of lysate: 40ug per lane

Primary antibody: 1/200 dilution

Secondary antibody dilution: 1/8000

Exposure time: 10 minutes



Immunohistochemical analysis of paraffin-embedded Human liver cancer tissue using #36855 at dilution 1/20.

Background

The Fos gene family consists of 4 members: FOS, FOSB, FOSL1, and FOSL2. These genes encode leucine zipper proteins that can dimerize with proteins of the JUN family, thereby forming the transcription factor complex AP-1. As such, the FOS proteins have been implicated as regulators of cell proliferation, differentiation, and transformation. Alternatively spliced transcript variants encoding different isoforms have been found for this gene.

Note: This product is for in vitro research use only and is not intended for use in humans or animals.