

## FLG Antibody

Catalog No: #36854

Orders: [order@signalwayantibody.com](mailto:order@signalwayantibody.com)Support: [tech@signalwayantibody.com](mailto:tech@signalwayantibody.com)

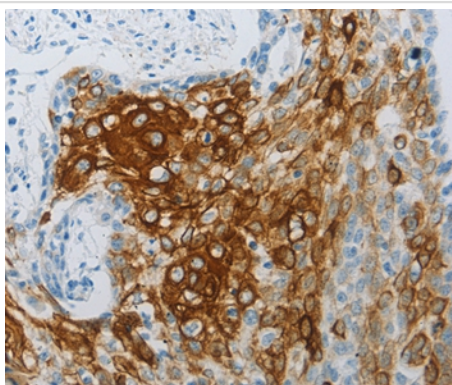
## Description

Product Name	FLG Antibody
Host Species	Rabbit
Clonality	Polyclonal
Purification	Antigen affinity purification.
Applications	IHC
Species Reactivity	Hu
Specificity	The antibody detects endogenous levels of total FLG protein.
Immunogen Type	Peptide
Immunogen Description	Synthetic peptide corresponding to a region derived from internal residues of human filaggrin
Target Name	FLG
Other Names	ATOD2
Accession No.	Swiss-Prot#: P20930NCBI Gene ID: 2312Gene Accssion: NP_002007
Concentration	0.9mg/ml
Formulation	Rabbit IgG in pH7.3 PBS, 0.05% NaN <sub>3</sub> , 50% Glycerol.
Storage	Store at -20°C

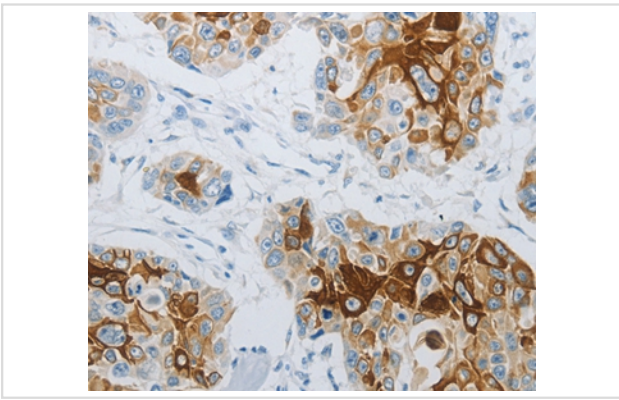
## Application Details

Immunohistochemistry: 1:25-1:100

## Images



Immunohistochemical analysis of paraffin-embedded Human cervical cancer tissue using #36854 at dilution 1/30.



Immunohistochemical analysis of paraffin-embedded Human esophagus cancer tissue using #36854 at dilution 1/30.

## Background

The protein encoded by this gene is an intermediate filament-associated protein that aggregates keratin intermediate filaments in mammalian epidermis. It is initially synthesized as a polyprotein precursor, profilaggrin (consisting of multiple filaggrin units of 324 aa each), which is localized in keratohyalin granules, and is subsequently proteolytically processed into individual functional filaggrin molecules. Mutations in this gene are associated with ichthyosis vulgaris.

Note: This product is for in vitro research use only and is not intended for use in humans or animals.