

CEBPA Antibody

Catalog No: #36789

Orders: order@signalwayantibody.comSupport: tech@signalwayantibody.com

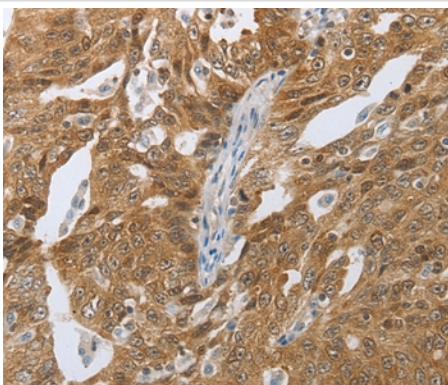
Description

Product Name	CEBPA Antibody
Host Species	Rabbit
Clonality	Polyclonal
Purification	Antigen affinity purification.
Applications	IHC
Species Reactivity	Hu
Specificity	The antibody detects endogenous levels of total CEBPA protein.
Immunogen Type	Peptide
Immunogen Description	Synthetic peptide corresponding to a region derived from internal residues of human CCAAT/enhancer binding protein (C/EBP), alpha
Target Name	CEBPA
Other Names	CEBP; C/EBP-alpha
Accession No.	Swiss-Prot#: P49715NCBI Gene ID: 1050Gene Accssion: NP_004355
Concentration	1mg/ml
Formulation	Rabbit IgG in pH7.3 PBS, 0.05% NaN ₃ , 50% Glycerol.
Storage	Store at -20°C

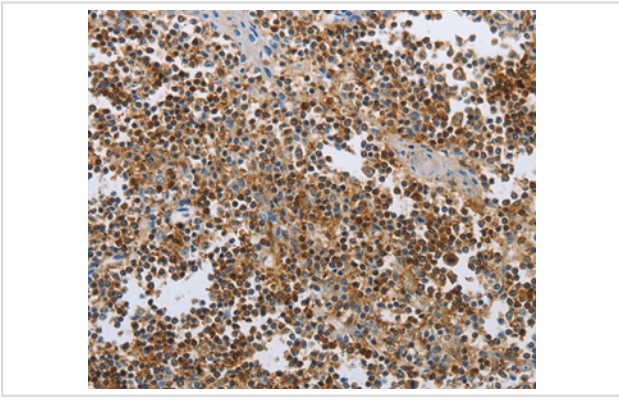
Application Details

Immunohistochemistry: 1:50-1:200

Images



Immunohistochemical analysis of paraffin-embedded Human tonsil cancer tissue using #36789 at dilution 1/40.



Immunohistochemical analysis of paraffin-embedded Human ovarian cancer tissue using #36789 at dilution 1/40.

Background

The protein encoded by this intronless gene is a bZIP transcription factor which can bind as a homodimer to certain promoters and enhancers. It can also form heterodimers with the related proteins CEBP-beta and CEBP-gamma. The encoded protein has been shown to bind to the promoter and modulate the expression of the gene encoding leptin, a protein that plays an important role in body weight homeostasis. Also, the encoded protein can interact with CDK2 and CDK4, thereby inhibiting these kinases and causing growth arrest in cultured cells.

Note: This product is for in vitro research use only and is not intended for use in humans or animals.