

## TRPM8 Antibody

Catalog No: #36613

Orders: [order@signalwayantibody.com](mailto:order@signalwayantibody.com)Support: [tech@signalwayantibody.com](mailto:tech@signalwayantibody.com)

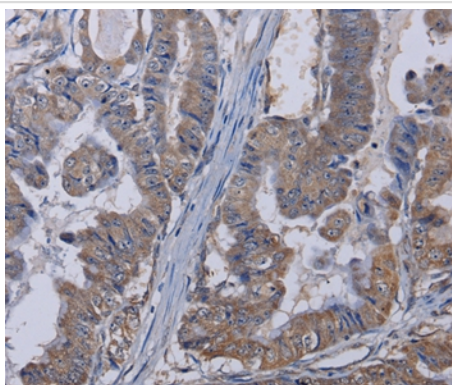
## Description

Product Name	TRPM8 Antibody
Host Species	Rabbit
Clonality	Polyclonal
Purification	Antigen affinity purification.
Applications	IHC
Species Reactivity	Hu
Specificity	The antibody detects endogenous levels of total TRPM8 protein.
Immunogen Type	Recombinant Protein
Immunogen Description	Full length fusion protein
Target Name	TRPM8
Other Names	TRPP8; LTRPC6
Accession No.	Swiss-Prot#: Q7Z2W7NCBI Gene ID: 79054Gene Accssion: BC001135
Concentration	1.1mg/ml
Formulation	Rabbit IgG in pH7.3 PBS, 0.05% NaN <sub>3</sub> , 50% Glycerol.
Storage	Store at -20°C

## Application Details

Immunohistochemistry: 1:25-1:100

## Images



Immunohistochemical analysis of paraffin-embedded Human esophagus cancer tissue using #36613 at dilution 1/30.

## Background

Transient receptor potential ion channels (TRPC) are a superfamily of six transmembrane segment-spanning gated cation channels. TRP subtypes mediate store-operated Ca<sup>2+</sup> entry, a process involving Ca<sup>2+</sup> influx and replenishment of Ca<sup>2+</sup> stores formerly emptied through the action of inositol 1,4,5-trisphosphate production and other Ca<sup>2+</sup> mobilizing agents.

---

Note: This product is for in vitro research use only and is not intended for use in humans or animals.