

OVAL Antibody

Catalog No: #36607

Orders: order@signalwayantibody.comSupport: tech@signalwayantibody.com

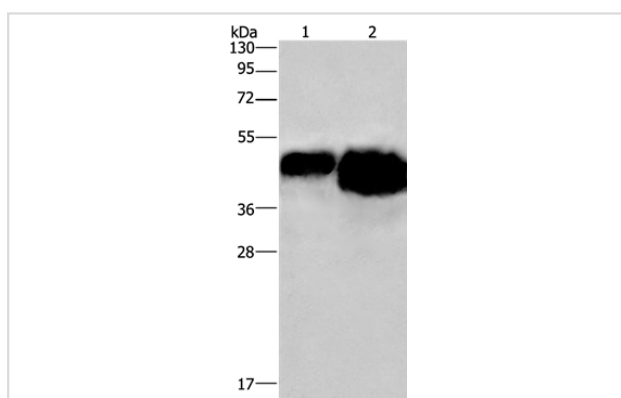
Description

Product Name	OVAL Antibody
Host Species	Rabbit
Clonality	Polyclonal
Purification	Antigen affinity purification.
Applications	WB
Species Reactivity	Hu Ms Rt
Specificity	The antibody detects endogenous levels of total OVAL protein.
Immunogen Type	Recombinant Protein
Immunogen Description	Fusion protein corresponding to residues near the C terminal of human ovalbumin (SERPINB14)
Target Name	OVAL
Other Names	SERPINB14
Accession No.	Swiss-Prot#: P01012NCBI Gene ID: 396058Gene Accssion: AB525084
SDS-PAGE MW	43kd
Concentration	2.3mg/ml
Formulation	Rabbit IgG in pH7.3 PBS, 0.05% NaN ₃ , 50% Glycerol.
Storage	Store at -20°C

Application Details

Western blotting: 1:500-1:2000

Images



Gel: 10%SDS-PAGE

Lysates (from left to right): 0.4ug and 0.8ug OVAL protein

Amount of lysate: 0.4ug 0.8ugug per lane

Primary antibody: 1/500 dilution

Secondary antibody dilution: 1/8000

Exposure time: 3 seconds

Background

Storage protein of egg white. Lacks protease inhibitory activity. Much lower abundance than corresponding protein in chicken egg white. Belongs to the serpin family. Ov-serpin subfamily.(Gallus gallus (chicken))

Note: This product is for in vitro research use only and is not intended for use in humans or animals.