

## TXLNA Antibody

Catalog No: #36551



Orders: order@signalwayantibody.com

Support: tech@signalwayantibody.com

## Description

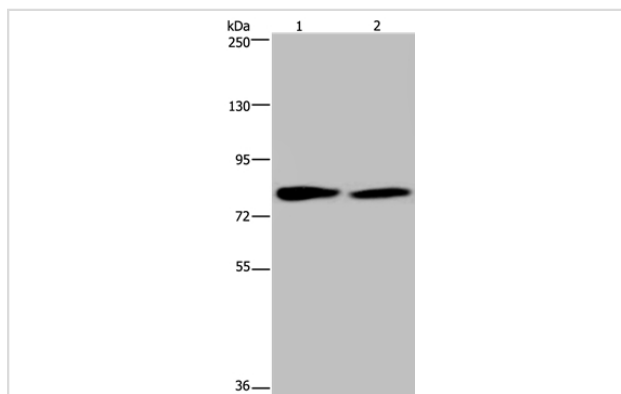
Product Name	TXLNA Antibody
Host Species	Rabbit
Clonality	Polyclonal
Purification	Antigen affinity purification.
Applications	WB IHC
Species Reactivity	Hu
Specificity	The antibody detects endogenous levels of total TXLNA protein.
Immunogen Type	Recombinant Protein
Immunogen Description	Fusion protein corresponding to a region derived from internal residues of human taxilin alpha
Target Name	TXLNA
Other Names	IL14; TXLN
Accession No.	Swiss-Prot#: P40222NCBI Gene ID: 200081Gene Accssion: BC103823
SDS-PAGE MW	62kd
Concentration	1.4mg/ml
Formulation	Rabbit IgG in pH7.3 PBS, 0.05% NaN <sub>3</sub> , 50% Glycerol.
Storage	Store at -20°C

## Application Details

Western blotting: 1:500-1:2000

Immunohistochemistry: 1:25-1:100

## Images



Gel: 6%SDS-PAGE

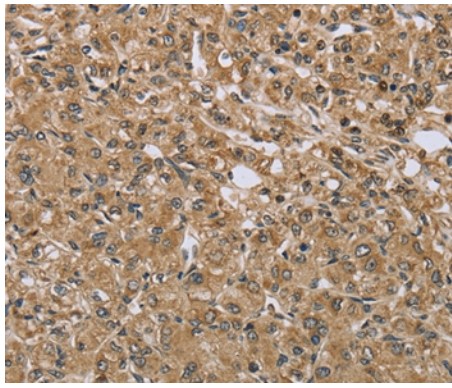
Lysates (from left to right): K562 and 293T cell

Amount of lysate: 40ug per lane

Primary antibody: 1/350 dilution

Secondary antibody dilution: 1/8000

Exposure time: 10 seconds



Immunohistochemical analysis of paraffin-embedded Human prostate cancer tissue using #36551 at dilution 1/30.

## Background

&#945;-taxilin is a novel binding partner of the syntaxin family which is implicated in intracellular vesicle trafficking. Through its C-terminal coiled-coil region, &#945;-taxilin interacts with the nascent polypeptide-associated complex (NAC), which acts as a transcriptional coactivator.

Note: This product is for in vitro research use only and is not intended for use in humans or animals.