

GC Antibody

Catalog No: #35989

Orders: order@signalwayantibody.comSupport: tech@signalwayantibody.com

Description

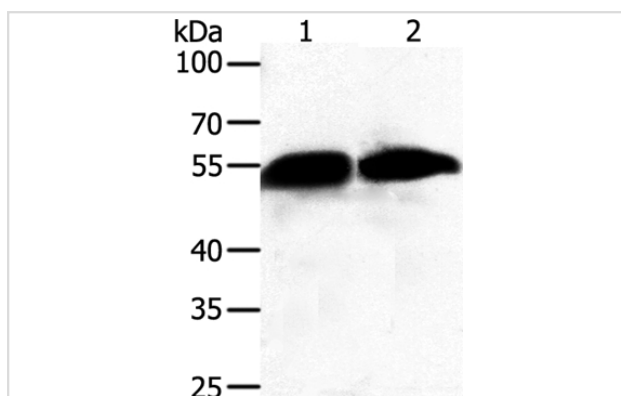
Product Name	GC Antibody
Host Species	Rabbit
Clonality	Polyclonal
Purification	Antigen affinity purification.
Applications	WB IHC
Species Reactivity	Hu
Specificity	The antibody detects endogenous levels of total GC protein.
Immunogen Type	Recombinant Protein
Immunogen Description	Fusion protein corresponding to a region derived from internal residues of human Group-specific component (vitamin D binding protein)
Target Name	GC
Other Names	DBP; GRD3; VDBG; VDBP; DBP/GC
Accession No.	Swiss-Prot#: P02774NCBI Gene ID: 2638Gene Accssion: BC057228
SDS-PAGE MW	53kd
Concentration	1.3mg/ml
Formulation	Rabbit IgG in pH7.3 PBS, 0.05% NaN ₃ , 50% Glycerol.
Storage	Store at -20°C

Application Details

Western blotting: 1:500-1:2000

Immunohistochemistry: 1:50-1:200

Images



Gel: 10%SDS-PAGE

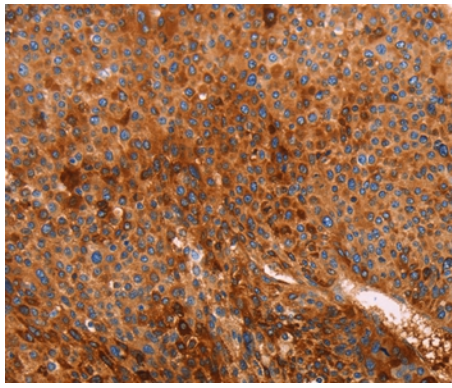
Lysates (from left to right): Human fetal liver tissue and A549 cell

Amount of lysate: 50ug per lane

Primary antibody: 1/500 dilution

Secondary antibody dilution: 1/8000

Exposure time: 20 seconds



Immunohistochemical analysis of paraffin-embedded Human liver cancer tissue using #35989 at dilution 1/40.

Background

The protein encoded by this gene belongs to the albumin gene family. It is a multifunctional protein found in plasma, ascitic fluid, cerebrospinal fluid and on the surface of many cell types. It binds to vitamin D and its plasma metabolites and transports them to target tissues. Alternatively spliced transcript variants encoding different isoforms have been found for this gene.

Note: This product is for in vitro research use only and is not intended for use in humans or animals.