

PGC Antibody

Catalog No: #35877

Orders: order@signalwayantibody.comSupport: tech@signalwayantibody.com

Description

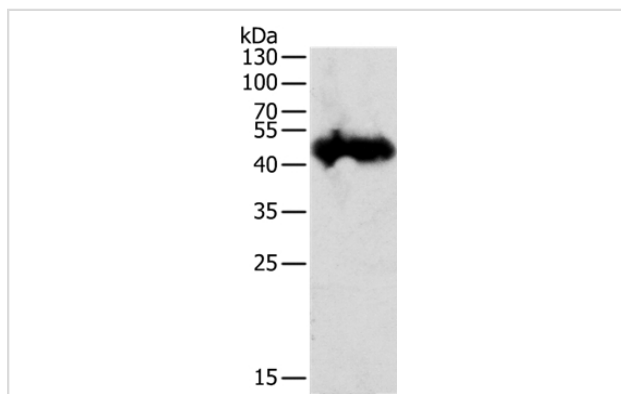
Product Name	PGC Antibody
Host Species	Rabbit
Clonality	Polyclonal
Purification	Antigen affinity purification.
Applications	WB IHC
Species Reactivity	Hu
Specificity	The antibody detects endogenous levels of total PGC protein.
Immunogen Type	Recombinant Protein
Immunogen Description	Full length fusion protein
Target Name	PGC
Other Names	PEPC; PGII
Accession No.	Swiss-Prot#: P20142NCBI Gene ID: 5225Gene Accssion: BC042578
SDS-PAGE MW	42kd
Concentration	0.7mg/ml
Formulation	Rabbit IgG in pH7.3 PBS, 0.05% NaN ₃ , 50% Glycerol.
Storage	Store at -20°C

Application Details

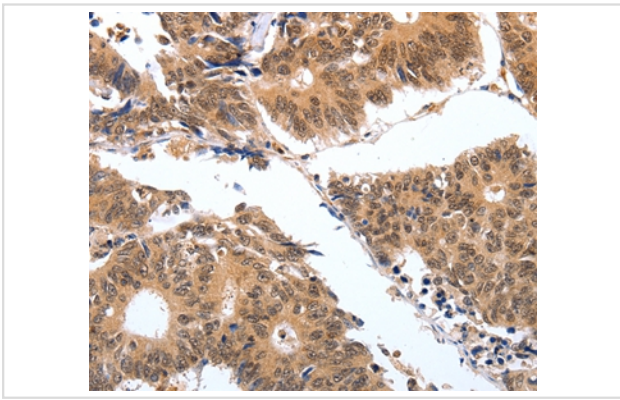
Western blotting: 1:500-1:2000

Immunohistochemistry: 1:25-1:100

Images



Gel: 12%SDS-PAGE
 Lysate: 50ug 823 cell
 Primary antibody: 1/300 dilution
 Secondary antibody dilution: 1/8000
 Exposure time: 30 seconds



Immunohistochemical analysis of paraffin-embedded Human colon cancer tissue using #35877 at dilution 1/25.

Background

This gene encodes an aspartic proteinase that belongs to the peptidase family A1. The encoded protein is a digestive enzyme that is produced in the stomach and constitutes a major component of the gastric mucosa. This protein is also secreted into the serum. This protein is synthesized as an inactive zymogen that includes a highly basic prosegment. This enzyme is converted into its active mature form at low pH by sequential cleavage of the prosegment that is carried out by the enzyme itself. Polymorphisms in this gene are associated with susceptibility to gastric cancers. Serum levels of this enzyme are used as a biomarker for certain gastric diseases including *Helicobacter pylori* related gastritis. Alternate splicing results in multiple transcript variants. A pseudogene of this gene is found on chromosome 1.?

Note: This product is for in vitro research use only and is not intended for use in humans or animals.