

SPDEF Antibody

Catalog No: #35874

Orders: order@signalwayantibody.comSupport: tech@signalwayantibody.com

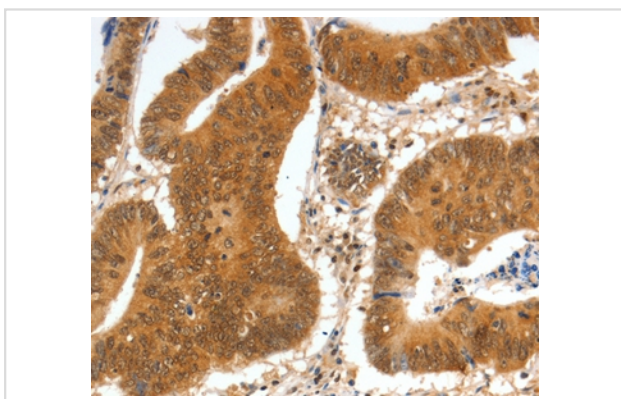
Description

Product Name	SPDEF Antibody
Host Species	Rabbit
Clonality	Polyclonal
Purification	Antigen affinity purification.
Applications	IHC
Species Reactivity	Hu
Specificity	The antibody detects endogenous levels of total SPDEF protein.
Immunogen Type	Recombinant Protein
Immunogen Description	Fusion protein corresponding to a region derived from internal residues of human SAM pointed domain containing ets transcription factor
Target Name	SPDEF
Other Names	PDEF; bA375E1.3; RP11-375E1__A.3
Accession No.	Swiss-Prot#: O95238NCBI Gene ID: 25803Gene Accssion: BC021299
Concentration	1.6mg/ml
Formulation	Rabbit IgG in pH7.3 PBS, 0.05% NaN ₃ , 50% Glycerol.
Storage	Store at -20°C

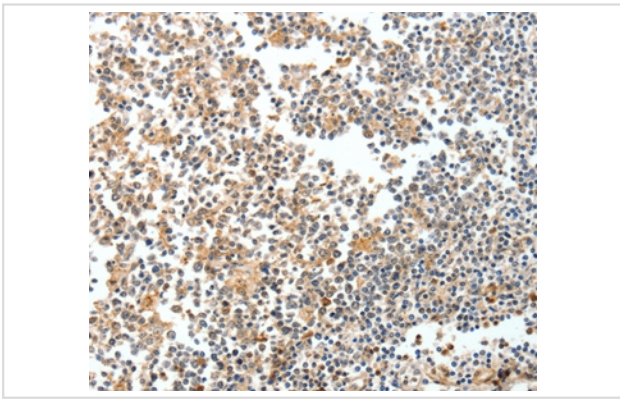
Application Details

Immunohistochemistry: 1:50-1:200

Images



Immunohistochemical analysis of paraffin-embedded Human colon cancer tissue using #35874 at dilution 1/60.



Immunohistochemical analysis of paraffin-embedded Human tonsil cancer tissue using #35874 at dilution 1/60.

Background

The protein encoded by this gene belongs to the ETS family of transcription factors. It is highly expressed in the prostate epithelial cells, and functions as an androgen-independent transactivator of prostate-specific antigen (PSA) promoter. Higher expression of this protein has also been reported in brain, breast, lung and ovarian tumors, compared to the corresponding normal tissues, and it shows better tumor-association than other cancer-associated molecules, making it a more suitable target for developing specific cancer therapies. Alternatively spliced transcript variants encoding different isoforms have been found for this gene.

Note: This product is for in vitro research use only and is not intended for use in humans or animals.