

## CCNC Antibody

Catalog No: #35702

Orders: [order@signalwayantibody.com](mailto:order@signalwayantibody.com)Support: [tech@signalwayantibody.com](mailto:tech@signalwayantibody.com)

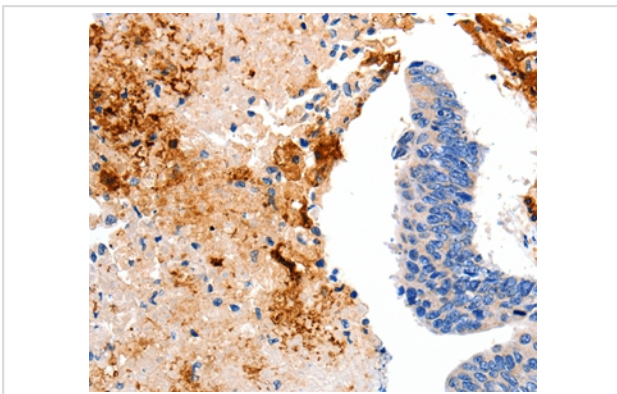
## Description

Product Name	CCNC Antibody
Host Species	Rabbit
Clonality	Polyclonal
Purification	Antigen affinity purification.
Applications	IHC
Species Reactivity	Hu
Specificity	The antibody detects endogenous levels of total CCNC protein.
Immunogen Type	Recombinant Protein
Immunogen Description	Full length fusion protein
Target Name	CCNC
Other Names	CycC
Accession No.	Swiss-Prot#: P24863NCBI Gene ID: 892Gene Accssion: BC010135
Concentration	0.4mg/ml
Formulation	Rabbit IgG in pH7.3 PBS, 0.05% NaN <sub>3</sub> , 50% Glycerol.
Storage	Store at -20°C

## Application Details

Immunohistochemistry: 1:10-1:50

## Images



Immunohistochemical analysis of paraffin-embedded Human colon cancer tissue using #35702 at dilution 1/15.

## Background

The protein encoded by this gene is a member of the cyclin family of proteins. The encoded protein interacts with cyclin-dependent kinase 8 and induces the phosphorylation of the carboxy-terminal domain of the large subunit of RNA polymerase II. The level of mRNAs for this gene peaks in the G1 phase of the cell cycle. Two transcript variants encoding different isoforms have been found for this gene.

---

Note: This product is for in vitro research use only and is not intended for use in humans or animals.