

CTSV Antibody

Catalog No: #35669

Orders: order@signalwayantibody.comSupport: tech@signalwayantibody.com

Description

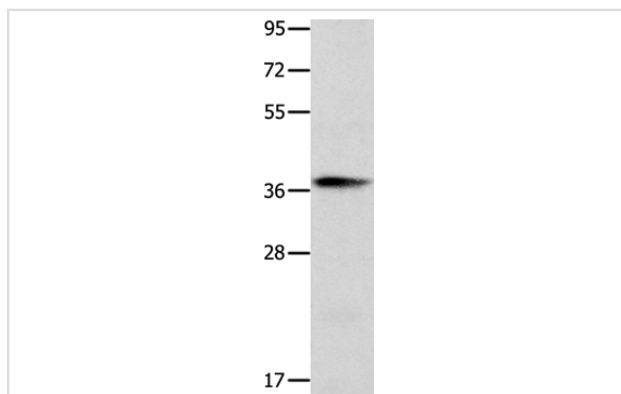
Product Name	CTSV Antibody
Host Species	Rabbit
Clonality	Polyclonal
Purification	Antigen affinity purification.
Applications	WB IHC
Species Reactivity	Hu Ms
Specificity	The antibody detects endogenous levels of total CTSV protein.
Immunogen Type	Recombinant Protein
Immunogen Description	Fusion protein corresponding to a region derived from internal residues of human cathepsin L2
Target Name	CTSV
Other Names	CTSU; CTSV; CATL2
Accession No.	Swiss-Prot#: O60911NCBI Gene ID: 1515Gene Accssion: BC110512
SDS-PAGE MW	38kd
Concentration	1.2mg/ml
Formulation	Rabbit IgG in pH7.3 PBS, 0.05% NaN ₃ , 50% Glycerol.
Storage	Store at -20°C

Application Details

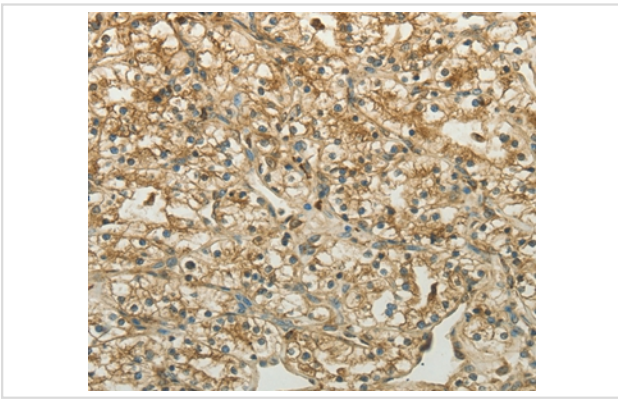
Western blotting: 1:500-1:2000

Immunohistochemistry: 1:50-1:200

Images



Gel: 10%SDS-PAGE
Lysate: 40ug NIH/3T3 cell
Primary antibody: 1/600 dilution
Secondary antibody dilution: 1/8000
Exposure time: 1 minute



Immunohistochemical analysis of paraffin-embedded Human renal cancer tissue using #35669 at dilution 1/50.

Background

The protein encoded by this gene, a member of the peptidase C1 family, is a lysosomal cysteine proteinase that may play an important role in corneal physiology. This gene is expressed in colorectal and breast carcinomas but not in normal colon, mammary gland, or peritumoral tissues, suggesting a possible role for this gene in tumor processes. Alternatively spliced variants, encoding the same protein, have been identified.

Note: This product is for in vitro research use only and is not intended for use in humans or animals.