

PIST Antibody

Catalog No: #35435

Orders: order@signalwayantibody.com

Support: tech@signalwayantibody.com

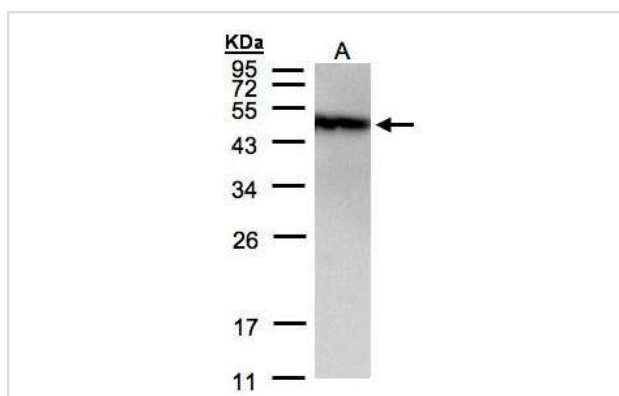
Description

Product Name	PIST Antibody
Host Species	Rabbit
Clonality	Polyclonal
Purification	Antibodies were purified by antigen-affinity chromatography.
Applications	WB
Species Reactivity	Hu
Specificity	The antibody detects endogenous levels of total PIST protein.
Immunogen Type	Peptide
Immunogen Description	Synthetic peptide corresponding to a region within amino acids 400 and 462 of PIST.
Target Name	PIST
Other Names	CAL antibody; FIG antibody; GOPC1 antibody; PIST antibody; dJ94G16.2 antibody; GOPC antibody; CFTR-associated ligand antibody; fused in glioblastoma antibody; PDZ protein interacting specifically with TC10 antibody; dJ94G16.2 PIST antibody; Golgi-associated
Accession No.	Swiss-Prot#:Q9HD26;NCBI Gene#:57120
SDS-PAGE MW	51kd
Concentration	1mg/ml
Formulation	Rabbit IgG in 1XPBS, 10% Glycerol (pH7). 0.01% Thimerosal was added as a preservative.
Storage	Store at -20°C

Application Details

Western blotting: 1:500-1:3000

Images



Sample(30 µg of whole cell lysate)

A:A431

12% SDS PAGE

#35435 diluted at 1:1500

Background

PIST is a PDZ domain-containing Golgi protein. PDZ domains contain approximately 90 amino acids and bind the extreme C terminus of proteins in a sequence-specific manner.[supplied by OMIM]

Note: This product is for in vitro research use only and is not intended for use in humans or animals.