

## GFAP Antibody

Catalog No: #35350

Orders: [order@signalwayantibody.com](mailto:order@signalwayantibody.com)Support: [tech@signalwayantibody.com](mailto:tech@signalwayantibody.com)

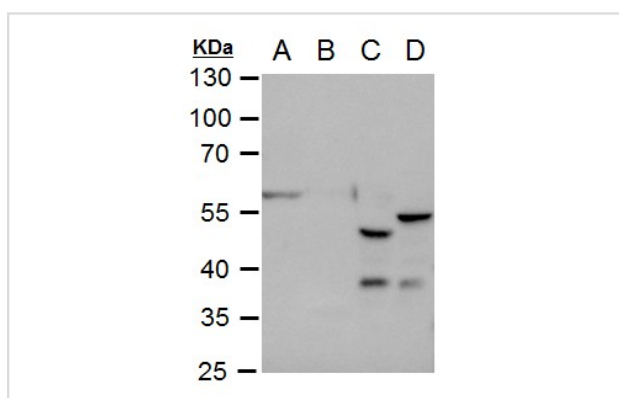
## Description

Product Name	GFAP Antibody
Host Species	Rabbit
Clonality	Polyclonal
Purification	Antibodies were purified by antigen-affinity chromatography.
Applications	WB
Species Reactivity	Hu Rt Ms
Specificity	The antibody detects endogenous levels of total GFAP protein.
Immunogen Type	Recombinant Protein
Immunogen Description	Recombinant fragment corresponding to a region within amino acids 190 and 432 of GFAP.
Target Name	GFAP
Other Names	FLJ45472 antibody; GFAP antibody; glial fibrillary acidic protein antibody
Accession No.	Swiss-Prot#:P14136;NCBI Gene#:2670
SDS-PAGE MW	50kd
Concentration	1.01mg/ml
Formulation	Rabbit IgG in 1XPBS, 1%BSA, 20% Glycerol (pH7). 0.01% Thimerosal was added as a preservative.
Storage	Store at -20°C

## Application Details

Western blotting: 1:500-1:3000

## Images



GFAP antibody detects GFAP protein by western blot analysis. A. 30 µg U87-MG whole cell extract B. 30 µg IMR32 whole cell extract C. 50 µg mouse brain extract D. 50 µg rat brain extract 10 % SDS-PAGE #35350 diluted at 1:2500

## Background

This gene encodes one of the major intermediate filament proteins of mature astrocytes. It is used as a marker to distinguish astrocytes from other glial cells during development. Mutations in this gene cause Alexander disease, a rare disorder of astrocytes in the central nervous system. Alternative splicing results in multiple transcript variants encoding distinct isoforms. [provided by RefSeq]

---

Note: This product is for in vitro research use only and is not intended for use in humans or animals.