

## FIBB Antibody

Catalog No: #35322

Package Size: #35322-1 50ul #35322-2 100ul

Orders: [order@signalwayantibody.com](mailto:order@signalwayantibody.com)Support: [tech@signalwayantibody.com](mailto:tech@signalwayantibody.com)

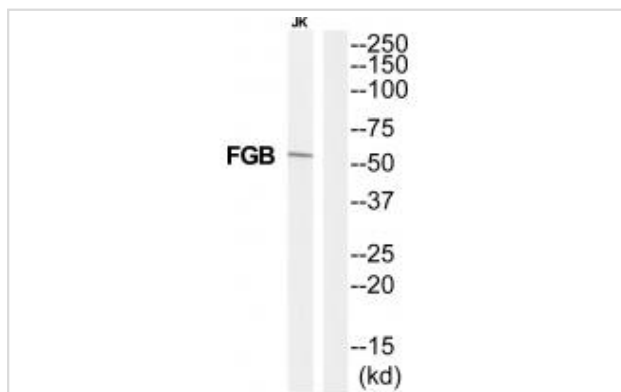
## Description

Product Name	FIBB Antibody
Host Species	Rabbit
Clonality	Polyclonal
Purification	The antibody was affinity-purified from rabbit antiserum by affinity-chromatography using epitope-specific immunogen.
Applications	WB
Species Reactivity	Hu
Specificity	The antibody detects endogenous levels of total FIBB protein.
Immunogen Type	Peptide
Immunogen Description	Synthesized peptide derived from C-terminal of human FIBB.
Target Name	FIBB
Other Names	FGB; FIBB; Fibrinogen beta chain; fibrinogen; B beta polypeptide
Accession No.	Swiss-Prot: P02675NCBI Gene ID: 2244
SDS-PAGE MW	56kd
Concentration	1.0mg/ml
Formulation	Rabbit IgG in phosphate buffered saline (without Mg <sup>2+</sup> and Ca <sup>2+</sup> ), pH 7.4, 150mM NaCl, 0.02% sodium azide and 50% glycerol.
Storage	Store at -20°C

## Application Details

Western blotting: 1:500~1:3000

## Images



Western blot analysis of extracts from Jurkat cells, using FIBB antibody #35322.

## Background

Fibrinogen has a double function: yielding monomers that polymerize into fibrin and acting as a cofactor in platelet aggregation.

Chung D.W., Biochemistry 22:3244-3250(1983).

Chung D.W., Adv. Exp. Med. Biol. 281:39-48(1990).

Chung D.W., (In) Liu C.Y., Chien S. (eds.); Fibrinogen, thrombosis, coagulation and fibrinolysis, pp.39-48, Plenum Press, New York (1991).

---

Note: This product is for in vitro research use only and is not intended for use in humans or animals.