

## CTSD Antibody

Catalog No: #35320

Package Size: #35320-1 50ul #35320-2 100ul

Orders: [order@signalwayantibody.com](mailto:order@signalwayantibody.com)Support: [tech@signalwayantibody.com](mailto:tech@signalwayantibody.com)

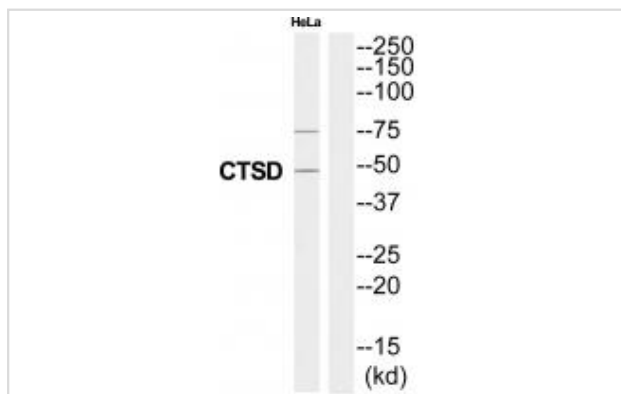
## Description

Product Name	CTSD Antibody
Host Species	Rabbit
Clonality	Polyclonal
Purification	The antibody was affinity-purified from rabbit antiserum by affinity-chromatography using epitope-specific immunogen.
Applications	WB
Species Reactivity	Hu Ms
Specificity	The antibody detects endogenous levels of total CTSDprotein.
Immunogen Type	Peptide
Immunogen Description	Synthesized peptide derived from Internal of human CTSD.
Target Name	CTSD
Other Names	CATD; Cathepsin D; Cathepsin D heavy chain; Cathepsin D light chain; ceroid-lipofuscinosis
Accession No.	Swiss-Prot: P07339NCBI Gene ID: 1509
SDS-PAGE MW	45kd
Concentration	1.0mg/ml
Formulation	Rabbit IgG in phosphate buffered saline (without Mg <sup>2+</sup> and Ca <sup>2+</sup> ), pH 7.4, 150mM NaCl, 0.02% sodium azide and 50% glycerol.
Storage	Store at -20°C

## Application Details

Western blotting: 1:500~1:3000

## Images



Western blot analysis of extracts from HeLa cells, using CTSD antibody #35320.

## Background

Acid protease active in intracellular protein breakdown. Involved in the pathogenesis of several diseases such as breast cancer and possibly

Alzheimer disease.

Faust P.L., Proc. Natl. Acad. Sci. U.S.A. 82:4910-4914(1985).

Westley B.R., Nucleic Acids Res. 15:3773-3786(1987).

Redecker B., DNA Cell Biol. 10:423-431(1991).

---

Note: This product is for in vitro research use only and is not intended for use in humans or animals.