

MRCKa Antibody

Catalog No: #35291



Package Size: #35291-1 50ul #35291-2 100ul

Orders: order@signalwayantibody.com

Support: tech@signalwayantibody.com

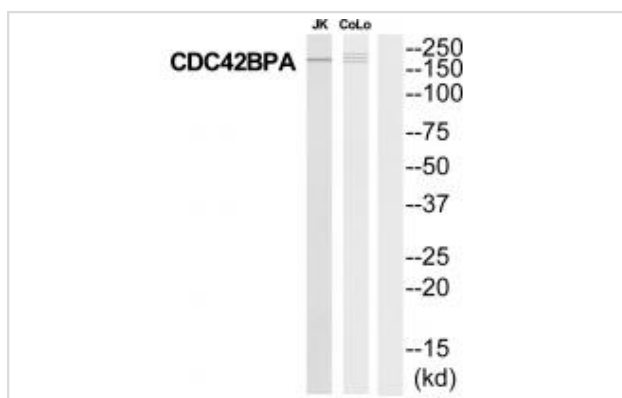
Description

Product Name	MRCKa Antibody
Host Species	Rabbit
Clonality	Polyclonal
Purification	The antibody was affinity-purified from rabbit antiserum by affinity-chromatography using epitope-specific immunogen.
Applications	WB IHC IF
Species Reactivity	Hu
Specificity	The antibody detects endogenous levels of total MRCKa protein.
Immunogen Type	Peptide
Immunogen Description	Synthesized peptide derived from Internal of human MRCKa.
Target Name	MRCKa
Other Names	CDC42 binding protein kinase alpha (DMPK-like); CDC42 binding protein kinase beta; CDC42-binding protein kinase alpha; CDC42-binding protein kinase alpha (DMPK-like); CDC42BPA
Accession No.	Swiss-Prot: Q5VT25NCBI Gene ID: 8476
SDS-PAGE MW	197kd
Concentration	1.0mg/ml
Formulation	Rabbit IgG in phosphate buffered saline (without Mg ²⁺ and Ca ²⁺), pH 7.4, 150mM NaCl, 0.02% sodium azide and 50% glycerol.
Storage	Store at -20°C

Application Details

Western blotting: 1:500~1:3000

Images



Western blot analysis of extracts from Jurkat/COLO205 cells, using MRCKa antibody #35291.

Background

Serine/threonine-protein kinase which is an important downstream effector of CDC42 and plays a role in the regulation of cytoskeleton reorganization and cell migration. Regulates actin cytoskeletal reorganization via phosphorylation of PPP1R12C and MYL9/MLC2. In concert with MYO18A and LURAP1, is involved in modulating lamellar actomyosin retrograde flow that is crucial to cell protrusion and migration. Phosphorylates: PPP1R12A, LIMK1 and LIMK2. May play a role in TFRC-mediated iron uptake.

Wilkinson S., Nat. Cell Biol. 7:255-261(2005).

Totoki Y., Submitted (MAR-2005) to the EMBL/GenBank/DDBJ databases.

Bechtel S., BMC Genomics 8:399-399(2007).

Note: This product is for in vitro research use only and is not intended for use in humans or animals.