

RHOD Antibody

Catalog No: #35000

Package Size: #35000-1 50ul #35000-2 100ul

Orders: order@signalwayantibody.com

Support: tech@signalwayantibody.com

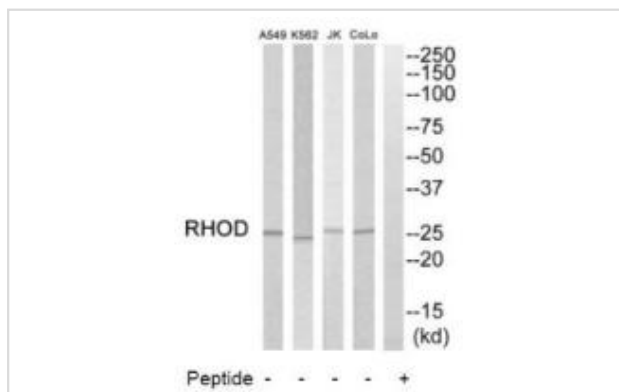
Description

Product Name	RHOD Antibody
Host Species	Rabbit
Clonality	Polyclonal
Purification	The antibody was affinity-purified from rabbit antiserum by affinity-chromatography using epitope-specific immunogen.
Applications	WB
Species Reactivity	Hu
Specificity	The antibody detects endogenous levels of total RHOD protein.
Immunogen Type	Peptide
Immunogen Description	Synthesized peptide derived from internal of human RHOD.
Target Name	RHOD
Other Names	Rho-related GTP-binding protein RhoD; Rho-related protein HP1; RhoHP1; RHOD;
Accession No.	Swiss-Prot: O00212NCBI Gene ID: 29984
SDS-PAGE MW	25kd
Concentration	1.0mg/ml
Formulation	Rabbit IgG in phosphate buffered saline (without Mg ²⁺ and Ca ²⁺), pH 7.4, 150mM NaCl, 0.02% sodium azide and 50% glycerol.
Storage	Store at -20°C

Application Details

Western blotting: 1:500~1:3000

Images



Western blot analysis of extracts from COLO205 cells, K562 cells, Jurkat cells and A549 cells, using RHOD antibody #35000.

Background

Involved in endosome dynamics. May coordinate membrane transport with the function of the cytoskeleton. Participates in reorganization of actin

cytoskeleton By similarity.

Shimizu F., *Biochim. Biophys. Acta* 1351:13-16(1997).

Puhl H.L. III, Submitted (APR-2002) to the EMBL/GenBank/DDBJ databases.

Taylor T.D., *Nature* 440:497-500(2006).

Gasman S., *Nat. Cell Biol.* 5:195-204(2003).

Note: This product is for in vitro research use only and is not intended for use in humans or animals.