

CHML Antibody

Catalog No: #34948

Package Size: #34948-1 50ul #34948-2 100ul

Orders: order@signalwayantibody.com

Support: tech@signalwayantibody.com

Description

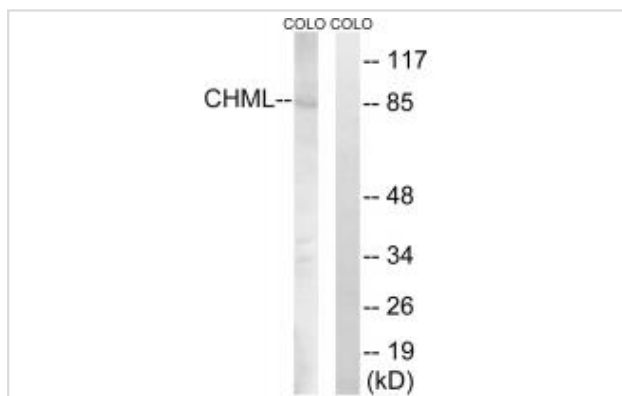
| | |
|-----------------------|--|
| Product Name | CHML Antibody |
| Host Species | Rabbit |
| Clonality | Polyclonal |
| Purification | The antibody was affinity-purified from rabbit antiserum by affinity-chromatography using epitope-specific immunogen. |
| Applications | WB IHC |
| Species Reactivity | Hu |
| Specificity | The antibody detects endogenous levels of total CHML protein. |
| Immunogen Type | Peptide |
| Immunogen Description | Synthesized peptide derived from internal of human CHML. |
| Target Name | CHML |
| Other Names | Rab proteins geranylgeranyltransferase component A 2; Rab escort protein 2; REP-2; Choroideraemia-like protein; |
| Accession No. | Swiss-Prot: P26374NCBI Gene ID: 1122 |
| SDS-PAGE MW | 85kd |
| Concentration | 1.0mg/ml |
| Formulation | Rabbit IgG in phosphate buffered saline (without Mg ²⁺ and Ca ²⁺), pH 7.4, 150mM NaCl, 0.02% sodium azide and 50% glycerol. |
| Storage | Store at -20°C |

Application Details

Western blotting: 1:500~1:3000

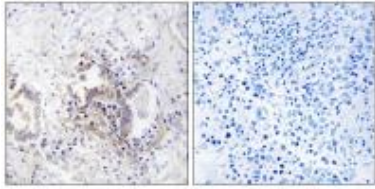
Immunohistochemistry: 1:50~1:100

Images



Western blot analysis of extracts from COLO cells, using CHML antibody #34948.

Immunohistochemistry analysis of paraffin-embedded human lung carcinoma tissue, using CHML antibody #34948.



Background

Substrate-binding subunit (component A) of the Rab geranylgeranyltransferase (GGTase) complex. Binds unprenylated Rab proteins and presents the substrate peptide to the catalytic component B. The component A is thought to be regenerated by transferring its prenylated Rab back to the donor membrane. Less effective than CHM in supporting prenylation of Rab3 family.

Cremers F.P.M., Hum. Mol. Genet. 1:71-75(1992).

Kasper G., Gene 295:27-32(2002).

Ota T. Nat. Genet. 36:40-45(2004)

Note: This product is for in vitro research use only and is not intended for use in humans or animals.