

PC Antibody

Catalog No: #34943

Package Size: #34943-1 50ul #34943-2 100ul

Orders: order@signalwayantibody.comSupport: tech@signalwayantibody.com

Description

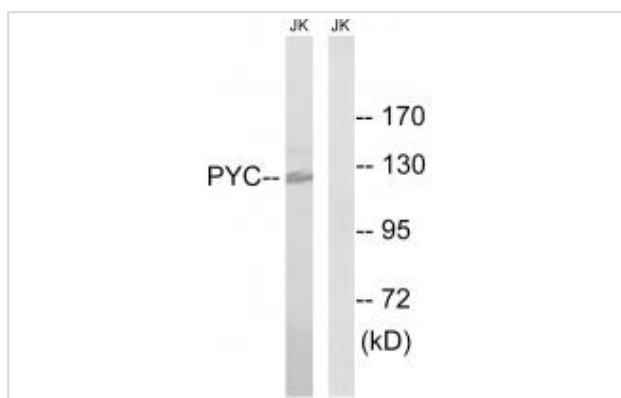
Product Name	PC Antibody
Host Species	Rabbit
Clonality	Polyclonal
Purification	The antibody was affinity-purified from rabbit antiserum by affinity-chromatography using epitope-specific immunogen.
Applications	WB IHC
Species Reactivity	Hu Ms
Specificity	The antibody detects endogenous levels of total PC protein.
Immunogen Type	Peptide
Immunogen Description	Synthesized peptide derived from internal of human PC.
Target Name	PC
Other Names	EC 6.4.1.1; PCB; PYC; Pyruvate carboxylase; mitochondrial
Accession No.	Swiss-Prot: P11498NCBI Gene ID: 5091
SDS-PAGE MW	120kd
Concentration	1.0mg/ml
Formulation	Rabbit IgG in phosphate buffered saline (without Mg ²⁺ and Ca ²⁺), pH 7.4, 150mM NaCl, 0.02% sodium azide and 50% glycerol.
Storage	Store at -20°C

Application Details

Western blotting: 1:500~1:3000

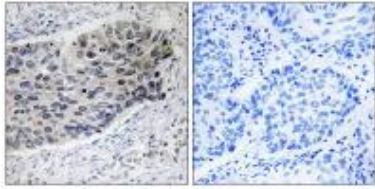
Immunohistochemistry: 1:50~1:100

Images



Western blot analysis of extracts from Jurkat cells, using PC antibody #34943.

Immunohistochemistry analysis of paraffin-embedded human lung carcinoma tissue using PC antibody #34943.



Background

Pyruvate carboxylase catalyzes a 2-step reaction, involving the ATP-dependent carboxylation of the covalently attached biotin in the first step and the transfer of the carboxyl group to pyruvate in the second. Catalyzes in a tissue specific manner, the initial reactions of glucose (liver, kidney) and lipid (adipose tissue, liver, brain) synthesis from pyruvate.

Wexler I.D., *Biochim. Biophys. Acta* 1227:46-52(1994).

Mackay N., *Biochem. Biophys. Res. Commun.* 202:1009-1014(1994).

Lamhonwah A.-M., *Arch. Biochem. Biophys.* 254:631-636(1987).

Note: This product is for in vitro research use only and is not intended for use in humans or animals.