

PIGH Antibody

Catalog No: #34901

Package Size: #34901-1 50ul #34901-2 100ul

Orders: order@signalwayantibody.comSupport: tech@signalwayantibody.com

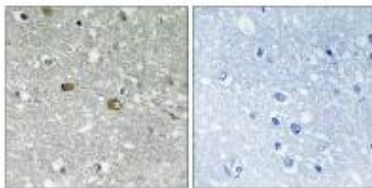
Description

Product Name	PIGH Antibody
Host Species	Rabbit
Clonality	Polyclonal
Purification	The antibody was affinity-purified from rabbit antiserum by affinity-chromatography using epitope-specific immunogen.
Applications	IHC
Species Reactivity	Hu Ms
Specificity	The antibody detects endogenous levels of total PIGH protein.
Immunogen Type	Peptide
Immunogen Description	Synthesized peptide derived from C-terminal of human PIGH.
Target Name	PIGH
Other Names	Phosphatidylinositol N-acetylglucosaminyltransferase subunit H; Phosphatidylinositol-glycan biosynthesis class H protein; PIG-H;
Accession No.	Swiss-Prot: Q14442NCBI Gene ID: 5283
SDS-PAGE MW	21kd
Concentration	1.0mg/ml
Formulation	Rabbit IgG in phosphate buffered saline (without Mg ²⁺ and Ca ²⁺), pH 7.4, 150mM NaCl, 0.02% sodium azide and 50% glycerol.
Storage	Store at -20°C

Application Details

Immunohistochemistry: 1:50~1:100

Images



Immunohistochemistry analysis of paraffin-embedded human brain tissue using PIGH antibody #34901.

Background

Part of the complex catalyzing the transfer of N-acetylglucosamine from UDP-N-acetylglucosamine to phosphatidylinositol, the first step of GPI biosynthesis.

Kamitani T., J. Biol. Chem. 268:20733-20736(1993).

Kalnine N., Submitted (MAY-2003) to the EMBL/GenBank/DDBJ databases.

The MGC Project Team; Genome Res. 14:2121-2127(2004).

Note: This product is for in vitro research use only and is not intended for use in humans or animals.