

## OMG Antibody

Catalog No: #34878

Package Size: #34878-1 50ul #34878-2 100ul

Orders: [order@signalwayantibody.com](mailto:order@signalwayantibody.com)Support: [tech@signalwayantibody.com](mailto:tech@signalwayantibody.com)

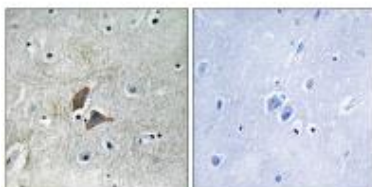
## Description

Product Name	OMG Antibody
Host Species	Rabbit
Clonality	Polyclonal
Purification	The antibody was affinity-purified from rabbit antiserum by affinity-chromatography using epitope-specific immunogen.
Applications	IHC
Species Reactivity	Hu
Specificity	The antibody detects endogenous levels of total OMG protein.
Immunogen Type	Peptide
Immunogen Description	Synthesized peptide derived from internal of human OMG.
Target Name	OMG
Other Names	Oligodendrocyte-myelin glycoprotein;
Accession No.	Swiss-Prot: P23515NCBI Gene ID: 4974
SDS-PAGE MW	48kd
Concentration	1.0mg/ml
Formulation	Rabbit IgG in phosphate buffered saline (without Mg <sup>2+</sup> and Ca <sup>2+</sup> ), pH 7.4, 150mM NaCl, 0.02% sodium azide and 50% glycerol.
Storage	Store at -20°C

## Application Details

Immunohistochemistry: 1:50~1:100

## Images



Immunohistochemistry analysis of paraffin-embedded human brain tissue using OMG antibody #34878.

## Background

Cell adhesion molecule contributing to the interactive process required for myelination in the central nervous system.

Viskochil D., Mol. Cell. Biol. 11:906-912(1991).  
Mikol D.D., J. Cell Biol. 110:471-479(1990).  
Mikol D.D., J. Cell Biol. 111:2673-2679(1990).

---

Note: This product is for in vitro research use only and is not intended for use in humans or animals.