

## DCT Antibody

Catalog No: #34754

Package Size: #34754-1 50ul #34754-2 100ul

Orders: [order@signalwayantibody.com](mailto:order@signalwayantibody.com)Support: [tech@signalwayantibody.com](mailto:tech@signalwayantibody.com)

## Description

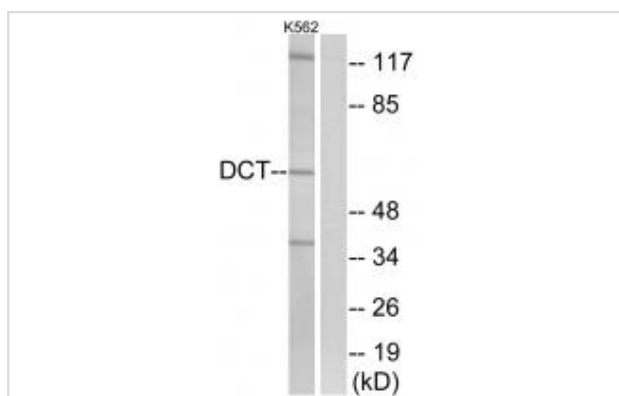
Product Name	DCT Antibody
Host Species	Rabbit
Clonality	Polyclonal
Purification	The antibody was affinity-purified from rabbit antiserum by affinity-chromatography using epitope-specific immunogen.
Applications	WB IF
Species Reactivity	Hu Ms
Specificity	The antibody detects endogenous levels of total DCT protein.
Immunogen Type	Peptide
Immunogen Description	Synthesized peptide derived from internal of human DCT.
Target Name	DCT
Other Names	L-dopachrome tautomerase [Precursor]; DCT; DT; EC 5.3.3.12; L-dopachrome Delta-isomerase
Accession No.	Swiss-Prot: P40126NCBI Gene ID: 1638
SDS-PAGE MW	60kd
Concentration	1.0mg/ml
Formulation	Rabbit IgG in phosphate buffered saline (without Mg <sup>2+</sup> and Ca <sup>2+</sup> ), pH 7.4, 150mM NaCl, 0.02% sodium azide and 50% glycerol.
Storage	Store at -20°C

## Application Details

Western blotting: 1:500~1:3000

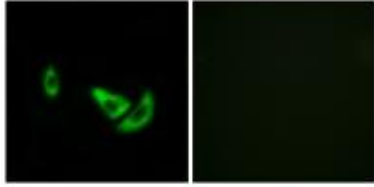
Immunofluorescence: 1:100~1:500

## Images



Western blot analysis of extracts from K562 cells, using DCT antibody #34754.

Immunofluorescence analysis of A549 cells, using DCT antibody #34754.



## Background

Involved in regulating eumelanin and phaeomelanin levels.  
Yokoyama K., *Biochim. Biophys. Acta* 1217:317-321(1994).  
Cassady J.L., *Gene* 143:295-298(1994).  
Bouchard B., *Eur. J. Biochem.* 219:127-134(1994).

Note: This product is for in vitro research use only and is not intended for use in humans or animals.