

GNAL Antibody

Catalog No: #34727



Package Size: #34727-1 50ul #34727-2 100ul

Orders: order@signalwayantibody.comSupport: tech@signalwayantibody.com

Description

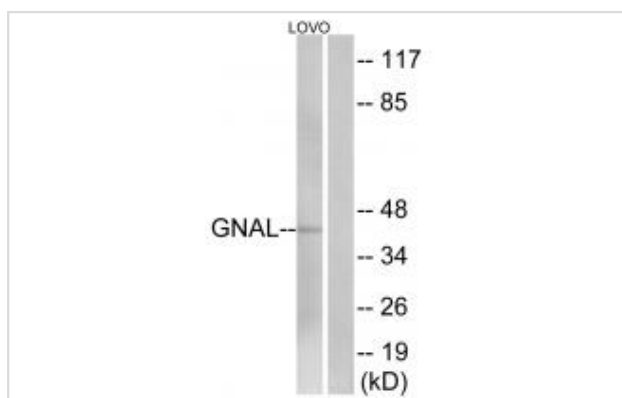
Product Name	GNAL Antibody
Host Species	Rabbit
Clonality	Polyclonal
Purification	The antibody was affinity-purified from rabbit antiserum by affinity-chromatography using epitope-specific immunogen.
Applications	WB IHC
Species Reactivity	Hu Ms Rt
Specificity	The antibody detects endogenous levels of total GNAL protein.
Immunogen Type	Peptide
Immunogen Description	Synthesized peptide derived from internal of human GNAL.
Target Name	GNAL
Other Names	adenylate cyclase-stimulating G alpha protein; olfactory type; guanine nucleotide-binding protein G(olf) alpha;
Accession No.	Swiss-Prot: P38405NCBI Gene ID: 2774
SDS-PAGE MW	40kd
Concentration	1.0mg/ml
Formulation	Rabbit IgG in phosphate buffered saline (without Mg ²⁺ and Ca ²⁺), pH 7.4, 150mM NaCl, 0.02% sodium azide and 50% glycerol.
Storage	Store at -20°C

Application Details

Western blotting: 1:500~1:3000

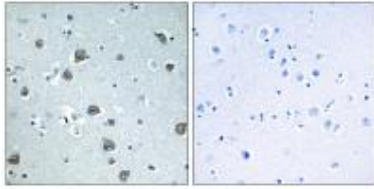
Immunohistochemistry: 1:50~1:100

Images



Western blot analysis of extracts from LOVO cells, using GNAL antibody #34727.

Immunohistochemistry analysis of paraffin-embedded human brain tissue using GNAL antibody #34727.



Background

Guanine nucleotide-binding proteins (G proteins) are involved as modulators or transducers in various transmembrane signaling systems. G(olf) alpha mediates signal transduction within the olfactory neuroepithelium and the basal ganglia. May be involved in some aspect of visual transduction, and in mediating the effect of one or more hormones/neurotransmitters.

Zigman J.M., *Endocrinology* 133:2508-2514(1993).

Vuoristo J.T., Submitted (APR-1996) to the EMBL/GenBank/DDBJ databases.

Puhl H.L. III, Submitted (MAR-2002) to the EMBL/GenBank/DDBJ databases.

Note: This product is for in vitro research use only and is not intended for use in humans or animals.