

RAD Antibody

Catalog No: #34723

Package Size: #34723-1 50ul #34723-2 100ul

Orders: order@signalwayantibody.comSupport: tech@signalwayantibody.com

Description

Product Name	RAD Antibody
Host Species	Rabbit
Clonality	Polyclonal
Purification	The antibody was affinity-purified from rabbit antiserum by affinity-chromatography using epitope-specific immunogen.
Applications	WB IHC IF
Species Reactivity	Hu Ms Rt
Specificity	The antibody detects endogenous levels of total RAD protein.
Immunogen Type	Peptide
Immunogen Description	Synthesized peptide derived from internal of human RAD.
Target Name	RAD
Other Names	GTP-binding protein RAD; RAD; RAD1; RAS associated with diabetes;
Accession No.	Swiss-Prot: P55042NCBI Gene ID: 6236
SDS-PAGE MW	33kd
Concentration	1.0mg/ml
Formulation	Rabbit IgG in phosphate buffered saline (without Mg ²⁺ and Ca ²⁺), pH 7.4, 150mM NaCl, 0.02% sodium azide and 50% glycerol.
Storage	Store at -20°C

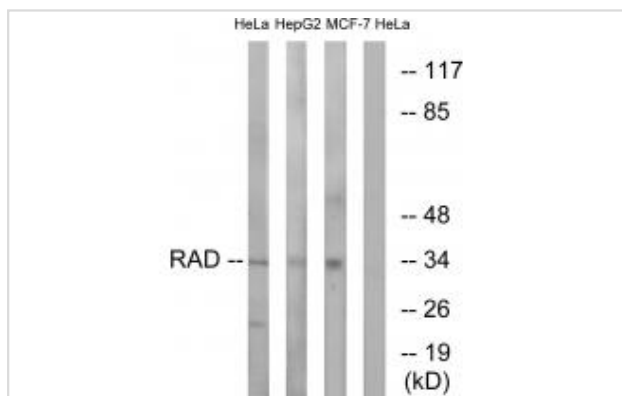
Application Details

Western blotting: 1:500~1:3000

Immunohistochemistry: 1:50~1:100

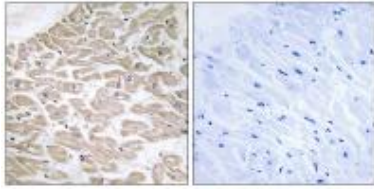
Immunofluorescence: 1:100~1:500

Images

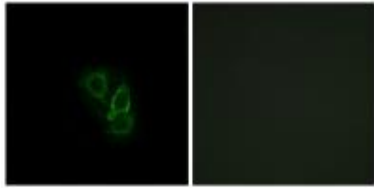


Western blot analysis of extracts from HeLa cells, HepG2 cells and MCF-7 cells, using RAD antibody #34723.

Immunohistochemistry analysis of paraffin-embedded human heart tissue using RAD antibody #34723.



Immunofluorescence analysis of A549 cells, using RAD antibody #34723.



Background

May play an important role in cardiac antiarrhythmia via the strong suppression of voltage-gated L-type Ca^{2+} currents. Regulates voltage-dependent L-type calcium channel subunit alpha-1C trafficking to the cell membrane By similarity. Inhibits cardiac hypertrophy through the calmodulin-dependent kinase II (CaMKII) pathway. Inhibits phosphorylation and activation of CAMK2D.

Reynet C., Science 262:1441-1444(1993).

The MGC Project Team; Genome Res. 14:2121-2127(2004).

Moyers J.S., J. Biol. Chem. 272:11832-11839(1997).

Note: This product is for in vitro research use only and is not intended for use in humans or animals.