

ERAS Antibody

Catalog No: #34716



Package Size: #34716-1 50ul #34716-2 100ul

Orders: order@signalwayantibody.comSupport: tech@signalwayantibody.com

Description

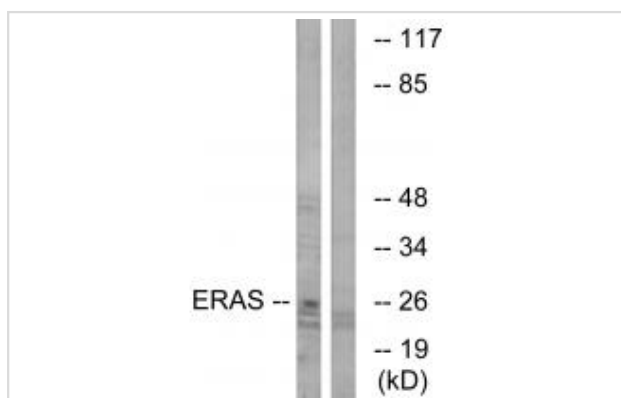
Product Name	ERAS Antibody
Host Species	Rabbit
Clonality	Polyclonal
Purification	The antibody was affinity-purified from rabbit antiserum by affinity-chromatography using epitope-specific immunogen.
Applications	WB IF
Species Reactivity	Hu
Specificity	The antibody detects endogenous levels of total ERAS protein.
Immunogen Type	Peptide
Immunogen Description	Synthesized peptide derived from C-terminal of human ERAS.
Target Name	ERAS
Other Names	GTPase ERas [Precursor]; E-Ras; Embryonic stem cell-expressed Ras; ERAS; HRAS2
Accession No.	Swiss-Prot: Q7Z444NCBI Gene ID: 3266
SDS-PAGE MW	25kd
Concentration	1.0mg/ml
Formulation	Rabbit IgG in phosphate buffered saline (without Mg ²⁺ and Ca ²⁺), pH 7.4, 150mM NaCl, 0.02% sodium azide and 50% glycerol.
Storage	Store at -20°C

Application Details

Western blotting: 1:500~1:3000

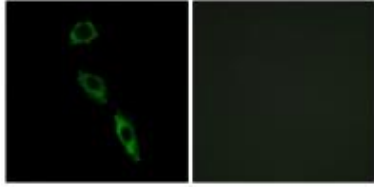
Immunofluorescence: 1:100~1:500

Images



Western blot analysis of extracts from Jurkat cells, using ERAS antibody #34716.

Immunofluorescence analysis of A549 cells, using ERAS antibody #34716.



Background

Ras proteins bind GDP/GTP and possess intrinsic GTPase activity. Plays an important role in the tumor-like growth properties of embryonic stem cells
By similarity.

Takahashi K., Nature 423:541-545(2003).

The MGC Project Team; Genome Res. 14:2121-2127(2004).

Note: This product is for in vitro research use only and is not intended for use in humans or animals.