

TUFM Antibody

Catalog No: #34669

Package Size: #34669-1 50ul #34669-2 100ul

Orders: order@signalwayantibody.comSupport: tech@signalwayantibody.com

Description

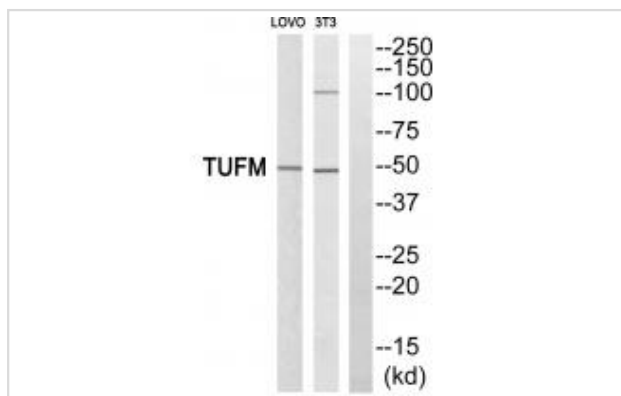
Product Name	TUFM Antibody
Host Species	Rabbit
Clonality	Polyclonal
Purification	The antibody was affinity-purified from rabbit antiserum by affinity-chromatography using epitope-specific immunogen.
Applications	WB IHC
Species Reactivity	Hu Ms
Specificity	The antibody detects endogenous levels of total TUFM protein.
Immunogen Type	Peptide
Immunogen Description	Synthesized peptide derived from internal of human TUFM.
Target Name	TUFM
Other Names	Elongation factor Tu; mitochondrial; EF-Tu; P43;
Accession No.	Swiss-Prot: P49411NCBI Gene ID: 7284
SDS-PAGE MW	50kd
Concentration	1.0mg/ml
Formulation	Rabbit IgG in phosphate buffered saline (without Mg ²⁺ and Ca ²⁺), pH 7.4, 150mM NaCl, 0.02% sodium azide and 50% glycerol.
Storage	Store at -20°C

Application Details

Western blotting: 1:500~1:3000

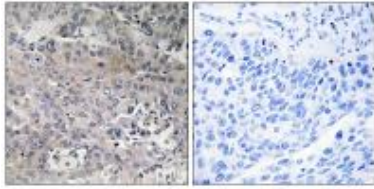
Immunohistochemistry: 1:50~1:100

Images



Western blot analysis of extracts from LOVO cells and 3T3 cells, using TUFM antibody #34669.

Immunohistochemistry analysis of paraffin-embedded human lung carcinoma tissue using TUFM antibody #34669.



Background

This protein promotes the GTP-dependent binding of aminoacyl-tRNA to the A-site of ribosomes during protein biosynthesis.

Woriak V.L., *Biochim. Biophys. Acta* 1264:347-356(1995).

Ling M., *Gene* 197:325-336(1997).

Wells J., *FEBS Lett.* 358:119-125(1995).

Note: This product is for in vitro research use only and is not intended for use in humans or animals.