

Myc Antibody

Catalog No: #34647

Package Size: #34647-1 50ul #34647-2 100ul

Orders: order@signalwayantibody.comSupport: tech@signalwayantibody.com

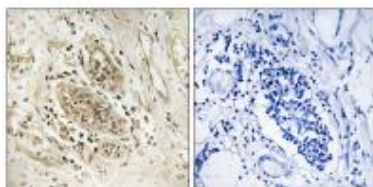
Description

Product Name	Myc Antibody
Host Species	Rabbit
Clonality	Polyclonal
Purification	The antibody was affinity-purified from rabbit antiserum by affinity-chromatography using epitope-specific immunogen.
Applications	IHC
Species Reactivity	Hu Ms
Specificity	The antibody detects endogenous levels of total POLE1 protein.
Immunogen Type	Peptide
Immunogen Description	Synthesized peptide derived from internal of human POLE1.
Target Name	Myc
Other Names	DNA polymerase epsilon catalytic subunit A; EC 2.7.7.7; DNA polymerase II subunit A;
Accession No.	Swiss-Prot: Q07864NCBI Gene ID: 5426
SDS-PAGE MW	261kd
Concentration	1.0mg/ml
Formulation	Rabbit IgG in phosphate buffered saline (without Mg ²⁺ and Ca ²⁺), pH 7.4, 150mM NaCl, 0.02% sodium azide and 50% glycerol.
Storage	Store at -20°C

Application Details

Immunohistochemistry: 1:50~1:100

Images



Immunohistochemistry analysis of paraffin-embedded human breast carcinoma tissue using POLE1 antibody #34647.

Background

Participates in DNA repair and in chromosomal DNA replication.

Kesti T., J. Biol. Chem. 268:10238-10245(1993).

Syvaoja J.E.;Submitted (JUN-1998) to the EMBL/GenBank/DDBJ databases.

Asahara H., Submitted (FEB-1996) to the EMBL/GenBank/DDBJ databases.

Note: This product is for in vitro research use only and is not intended for use in humans or animals.