

CCS Antibody

Catalog No: #34622

Package Size: #34622-1 50ul #34622-2 100ul

Orders: order@signalwayantibody.comSupport: tech@signalwayantibody.com

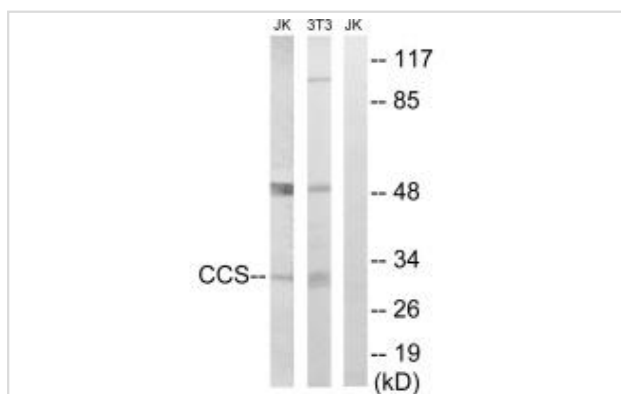
Description

Product Name	CCS Antibody
Host Species	Rabbit
Clonality	Polyclonal
Purification	The antibody was affinity-purified from rabbit antiserum by affinity-chromatography using epitope-specific immunogen.
Applications	WB
Species Reactivity	Hu Ms
Specificity	The antibody detects endogenous levels of total CCS protein.
Immunogen Type	Peptide
Immunogen Description	Synthesized peptide derived from C-terminal of human CCS.
Target Name	CCS
Other Names	copper chaperone for superoxide dismutase; MGC138260;
Accession No.	Swiss-Prot: O14618NCBI Gene ID: 9973
SDS-PAGE MW	32kd
Concentration	1.0mg/ml
Formulation	Rabbit IgG in phosphate buffered saline (without Mg ²⁺ and Ca ²⁺), pH 7.4, 150mM NaCl, 0.02% sodium azide and 50% glycerol.
Storage	Store at -20°C

Application Details

Western blotting: 1:500~1:3000

Images



Western blot analysis of extracts from Jurkat cells and 3T3 cells, using CCS antibody #34622.

Background

Delivers copper to copper zinc superoxide dismutase (SOD1).

Culotta V.C., J. Biol. Chem. 272:23469-23472(1997).

Halleck A., Submitted (JUN-2004) to the EMBL/GenBank/DDBJ databases.

Casareno R.L.B., J. Biol. Chem. 273:23625-23628(1998).

Note: This product is for in vitro research use only and is not intended for use in humans or animals.