

## CFI Antibody

Catalog No: #34614

Package Size: #34614-1 50ul #34614-2 100ul

Orders: [order@signalwayantibody.com](mailto:order@signalwayantibody.com)Support: [tech@signalwayantibody.com](mailto:tech@signalwayantibody.com)

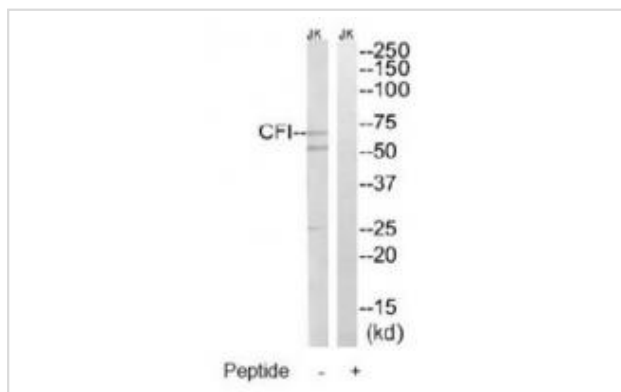
## Description

Product Name	CFI Antibody
Host Species	Rabbit
Clonality	Polyclonal
Purification	The antibody was affinity-purified from rabbit antiserum by affinity-chromatography using epitope-specific immunogen.
Applications	WB
Species Reactivity	Hu
Specificity	The antibody detects endogenous levels of total CFI protein.
Immunogen Type	Peptide
Immunogen Description	Synthesized peptide derived from internal of human CFI.
Target Name	CFI
Other Names	C3b-INA; C3B/C4B inactivator; CFAI; complement factor I; factor I
Accession No.	Swiss-Prot: P05156NCBI Gene ID: 3426
SDS-PAGE MW	66kd
Concentration	1.0mg/ml
Formulation	Rabbit IgG in phosphate buffered saline (without Mg <sup>2+</sup> and Ca <sup>2+</sup> ), pH 7.4, 150mM NaCl, 0.02% sodium azide and 50% glycerol.
Storage	Store at -20°C

## Application Details

Western blotting: 1:500~1:3000

## Images



Western blot analysis of extracts from Jurkat cells, using CFI antibody #34614.

## Background

Responsible for cleaving the alpha-chains of C4b and C3b in the presence of the cofactors C4-binding protein and factor H respectively.

Wilson R.K., Nature 434:724-731(2005).  
Goldberger G., Gene 208:17-24(1998).  
Wang L., Zou H., J. Proteome Res. 8:651-661(2009).

---

Note: This product is for in vitro research use only and is not intended for use in humans or animals.