

## LYAR Antibody

Catalog No: #34561

Package Size: #34561-1 50ul #34561-2 100ul

Orders: order@signalwayantibody.com

Support: tech@signalwayantibody.com

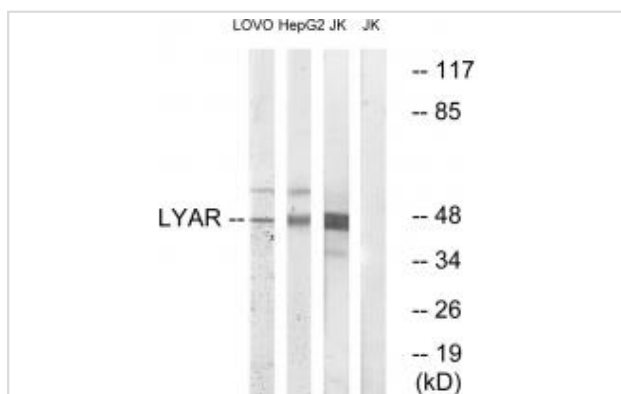
## Description

Product Name	LYAR Antibody
Host Species	Rabbit
Clonality	Polyclonal
Purification	The antibody was affinity-purified from rabbit antiserum by affinity-chromatography using epitope-specific immunogen.
Applications	WB
Species Reactivity	Hu
Specificity	The antibody detects endogenous levels of total LYAR protein.
Immunogen Type	Peptide
Immunogen Description	Synthesized peptide derived from internal of human LYAR.
Target Name	LYAR
Other Names	likely ortholog of mouse Ly1 antibody reactive clone;
Accession No.	Swiss-Prot: Q9NX58NCBI Gene ID: 55646
SDS-PAGE MW	44kd
Concentration	1.0mg/ml
Formulation	Rabbit IgG in phosphate buffered saline (without Mg <sup>2+</sup> and Ca <sup>2+</sup> ), pH 7.4, 150mM NaCl, 0.02% sodium azide and 50% glycerol.
Storage	Store at -20°C

## Application Details

Western blotting: 1:500~1:3000

## Images



Western blot analysis of extracts from LOVO cells, HepG2 cells and Jurkat cells, using LYAR antibody #34561.

## Background

Wiemann S., Genome Res. 11:422-435(2001).

Ota T., Nat. Genet. 36:40-45(2004).

Ebert L., Submitted (JUN-2004) to the EMBL/GenBank/DDBJ databases.

---

Note: This product is for in vitro research use only and is not intended for use in humans or animals.