

CPE Antibody

Catalog No: #34548

Package Size: #34548-1 50ul #34548-2 100ul

Orders: order@signalwayantibody.comSupport: tech@signalwayantibody.com

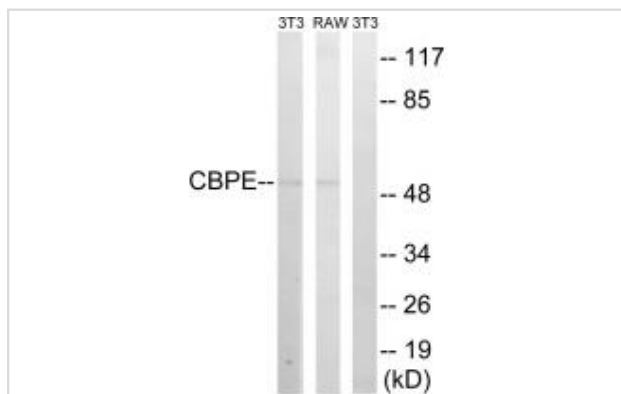
Description

| | |
|-----------------------|--|
| Product Name | CPE Antibody |
| Host Species | Rabbit |
| Clonality | Polyclonal |
| Purification | The antibody was affinity-purified from rabbit antiserum by affinity-chromatography using epitope-specific immunogen. |
| Applications | WB |
| Species Reactivity | Hu Ms |
| Specificity | The antibody detects endogenous levels of total CPE protein. |
| Immunogen Type | Peptide |
| Immunogen Description | Synthesized peptide derived from internal of human CPE. |
| Target Name | CPE |
| Other Names | carboxypeptidase e; carboxypeptidase e preproprotein; cbpe; cpe; |
| Accession No. | Swiss-Prot: P16870NCBI Gene ID: 1363 |
| SDS-PAGE MW | 53kd |
| Concentration | 1.0mg/ml |
| Formulation | Rabbit IgG in phosphate buffered saline (without Mg ²⁺ and Ca ²⁺), pH 7.4, 150mM NaCl, 0.02% sodium azide and 50% glycerol. |
| Storage | Store at -20°C |

Application Details

Western blotting: 1:500~1:3000

Images



Western blot analysis of extracts from 3T3 cells and RAW264.7 cells, using CPE antibody #34548.

Background

Removes residual C-terminal Arg or Lys remaining after initial endoprotease cleavage during prohormone processing. Processes proinsulin.

Manser E., Biochem. J. 267:517-525(1990).
Utsunomiya N., Diabetologia 41:701-705(1998).
Sjoebloom T., Science 314:268-274(2006)

Note: This product is for in vitro research use only and is not intended for use in humans or animals.