

AMPH Antibody

Catalog No: #34411



Package Size: #34411-1 50ul #34411-2 100ul

Orders: order@signalwayantibody.comSupport: tech@signalwayantibody.com

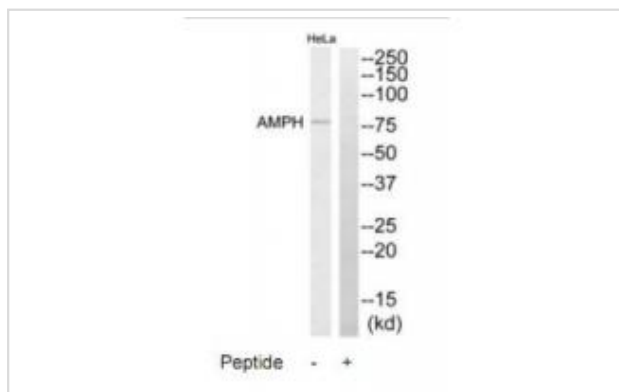
Description

Product Name	AMPH Antibody
Host Species	Rabbit
Clonality	Polyclonal
Purification	The antibody was affinity-purified from rabbit antiserum by affinity-chromatography using epitope-specific immunogen.
Applications	WB
Species Reactivity	Hu
Specificity	The antibody detects endogenous levels of total AMPH protein.
Immunogen Type	Peptide
Immunogen Description	Synthesized peptide derived from internal of human AMPH.
Target Name	AMPH
Other Names	AMPH; AMPH1;
Accession No.	Swiss-Prot: P49418NCBI Gene ID: 273
SDS-PAGE MW	76kd
Concentration	1.0mg/ml
Formulation	Rabbit IgG in phosphate buffered saline (without Mg ²⁺ and Ca ²⁺), pH 7.4, 150mM NaCl, 0.02% sodium azide and 50% glycerol.
Storage	Store at -20°C

Application Details

Western blotting: 1:500~1:3000

Images



Western blot analysis of extracts from HeLa cells, using AMPH antibody #34411.

Background

May participate in mechanisms of regulated exocytosis in synapses and certain endocrine cell types. May control the properties of the membrane

associated cytoskeleton.

David C., FEBS Lett. 351:73-79(1994).

Yamamoto R., Hum. Mol. Genet. 4:265-268(1995).

Floyd S.R., Mol. Med. 4:29-39(1998).

Note: This product is for in vitro research use only and is not intended for use in humans or animals.