

PHCA Antibody

Catalog No: #34405

Package Size: #34405-1 50ul #34405-2 100ul

Orders: order@signalwayantibody.comSupport: tech@signalwayantibody.com

Description

Product Name	PHCA Antibody
Host Species	Rabbit
Clonality	Polyclonal
Purification	The antibody was affinity-purified from rabbit antiserum by affinity-chromatography using epitope-specific immunogen.
Applications	WB IHC IF
Species Reactivity	Hu
Specificity	The antibody detects endogenous levels of total PHCA protein.
Immunogen Type	Peptide
Immunogen Description	Synthesized peptide derived from internal of human PHCA.
Target Name	PHCA
Other Names	Alkaline phytoceramidase; Aphc; Alkaline ceramidase; EC 3.5.1.-; Alkaline dihydroceramidase SB89
Accession No.	Swiss-Prot: Q9NUN7NCBI Gene ID: 55331
SDS-PAGE MW	35kd
Concentration	1.0mg/ml
Formulation	Rabbit IgG in phosphate buffered saline (without Mg ²⁺ and Ca ²⁺), pH 7.4, 150mM NaCl, 0.02% sodium azide and 50% glycerol.
Storage	Store at -20°C

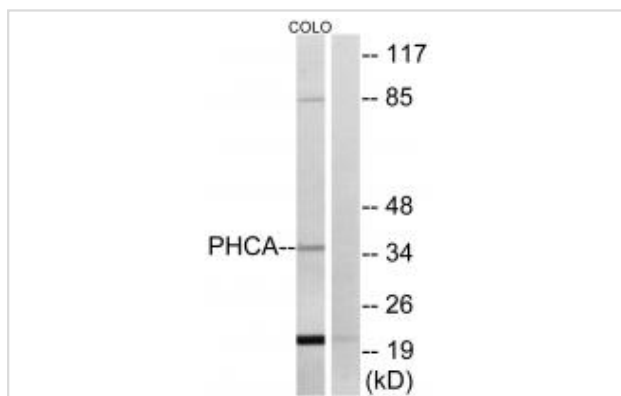
Application Details

Western blotting: 1:500~1:3000

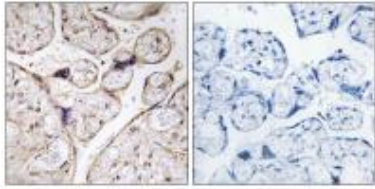
Immunohistochemistry: 1:50~1:100

Immunofluorescence: 1:100~1:500

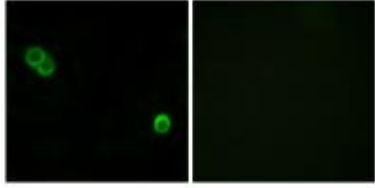
Images



Western blot analysis of extracts from COLO cells, using PHCA antibody #34405.



Immunohistochemistry analysis of paraffin-embedded human placenta tissue using PHCA antibody #34405.



Immunofluorescence analysis of MCF-7 cells, using PHCA antibody #34405.

Background

Hydrolyzes only phytoceramide into phytosphingosine and free fatty acid. Does not have reverse activity.

Mao C., J. Biol. Chem. 276:26577-26588(2001).

Li N., Submitted (DEC-2000) to the EMBL/GenBank/DDBJ databases.

Ota T., Nat. Genet. 36:40-45(2004).

Note: This product is for in vitro research use only and is not intended for use in humans or animals.