

PGLS Antibody

Catalog No: #34365



Package Size: #34365-1 50ul #34365-2 100ul

Orders: order@signalwayantibody.comSupport: tech@signalwayantibody.com

Description

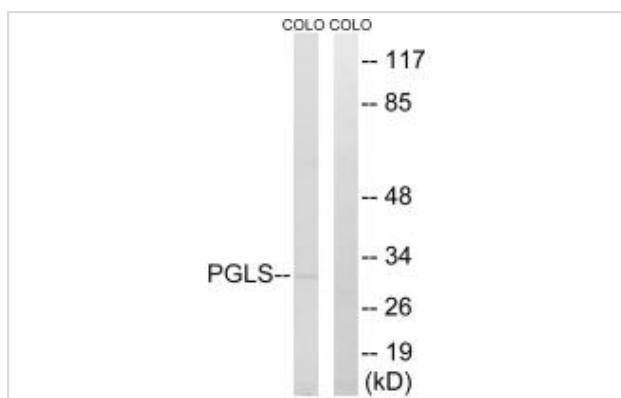
Product Name	PGLS Antibody
Host Species	Rabbit
Clonality	Polyclonal
Purification	The antibody was affinity-purified from rabbit antiserum by affinity-chromatography using epitope-specific immunogen.
Applications	WB IHC
Species Reactivity	Hu
Specificity	The antibody detects endogenous levels of total PGLS protein.
Immunogen Type	Peptide
Immunogen Description	Synthesized peptide derived from internal of human PGLS.
Target Name	PGLS
Other Names	6-phosphogluconolactonase; EC 3.1.1.31; 6PGL;
Accession No.	Swiss-Prot: O95336NCBI Gene ID: 25796
SDS-PAGE MW	30kd
Concentration	1.0mg/ml
Formulation	Rabbit IgG in phosphate buffered saline (without Mg ²⁺ and Ca ²⁺), pH 7.4, 150mM NaCl, 0.02% sodium azide and 50% glycerol.
Storage	Store at -20°C

Application Details

Western blotting: 1:500~1:3000

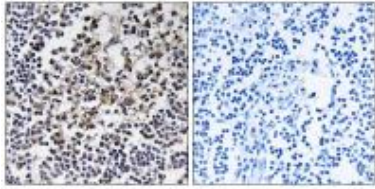
Immunohistochemistry: 1:50~1:100

Images



Western blot analysis of extracts from COLO cells, using PGLS antibody #34365.

Immunohistochemistry analysis of paraffin-embedded human lymph node tissue, using PGLS antibody #34365.



Background

Hydrolysis of 6-phosphogluconolactone to 6-phosphogluconate.

Collard F., FEBS Lett. 459:223-226(1999).

The MGC Project Team, Genome Res. 14:2121-2127(2004).

Barrow I.K.-P., Submitted (AUG-1998) to the EMBL/GenBank/DDBJ databases.

Note: This product is for in vitro research use only and is not intended for use in humans or animals.