

## DCC Antibody

Catalog No: #34265

Package Size: #34265-1 50ul #34265-2 100ul

Orders: [order@signalwayantibody.com](mailto:order@signalwayantibody.com)Support: [tech@signalwayantibody.com](mailto:tech@signalwayantibody.com)

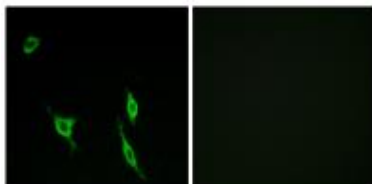
## Description

Product Name	DCC Antibody
Host Species	Rabbit
Clonality	Polyclonal
Purification	The antibody was affinity-purified from rabbit antiserum by affinity-chromatography using epitope-specific immunogen.
Applications	IF
Species Reactivity	Hu
Specificity	The antibody detects endogenous levels of total DCC protein.
Immunogen Type	Peptide
Immunogen Description	Synthesized peptide derived from internal of human DCC.
Target Name	DCC
Other Names	colorectal cancer suppressor; deleted in colorectal carcinoma; netrin receptor DCC; tumor suppressor protein DCC;
Accession No.	Swiss-Prot: P43146NCBI Gene ID: 1630
SDS-PAGE MW	158kd
Concentration	1.0mg/ml
Formulation	Rabbit IgG in phosphate buffered saline (without Mg <sup>2+</sup> and Ca <sup>2+</sup> ), pH 7.4, 150mM NaCl, 0.02% sodium azide and 50% glycerol.
Storage	Store at -20°C

## Application Details

Immunofluorescence: 1:100~1:500

## Images



Immunofluorescence analysis of LOVO cells, using DCC antibody #34265.

## Background

---

Receptor for netrin required for axon guidance. Mediates axon attraction of neuronal growth cones in the developing nervous system upon ligand binding. Its association with UNC5 proteins may trigger signaling for axon repulsion. It also acts as a dependence receptor required for apoptosis induction when not associated with netrin ligand. Implicated as a tumor suppressor gene.

Hedrick L., Genes Dev. 8:1174-1183(1994).

Cho K.R., Genomics 19:525-531(1994).

Sjoeblom T., Science 314:268-274(2006).

---

Note: This product is for in vitro research use only and is not intended for use in humans or animals.