

CIDEB Antibody

Catalog No: #34263

Package Size: #34263-1 50ul #34263-2 100ul

Orders: order@signalwayantibody.com

Support: tech@signalwayantibody.com

Description

Product Name	CIDEB Antibody
Host Species	Rabbit
Clonality	Polyclonal
Purification	The antibody was affinity-purified from rabbit antiserum by affinity-chromatography using epitope-specific immunogen.
Applications	WB IHC IF
Species Reactivity	Hu Ms
Specificity	The antibody detects endogenous levels of total CIDEB protein
Immunogen Type	Peptide
Immunogen Description	Synthesized peptide derived from internal of human CIDEB.
Target Name	CIDEB
Other Names	cell death activator CIDE-B; cell death-inducing DFFA-like effector B;
Accession No.	Swiss-Prot: Q9UHD4NCBI Gene ID: 27141
SDS-PAGE MW	24kd
Concentration	1.0mg/ml
Formulation	Rabbit IgG in phosphate buffered saline (without Mg ²⁺ and Ca ²⁺), pH 7.4, 150mM NaCl, 0.02% sodium azide and 50% glycerol.
Storage	Store at -20°C

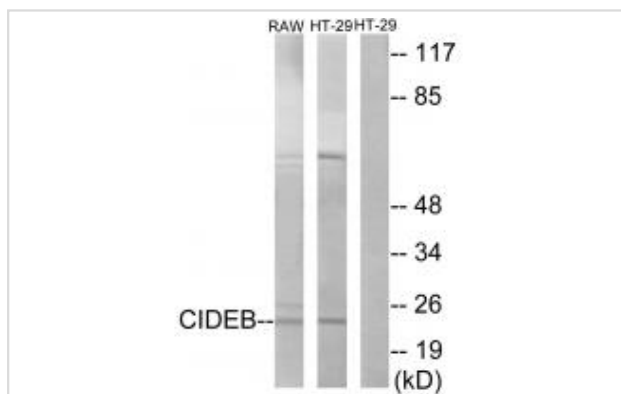
Application Details

Western blotting: 1:500~1:3000

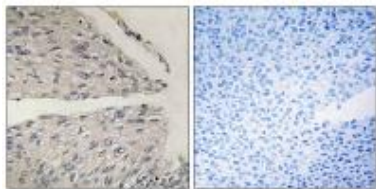
Immunohistochemistry: 1:50~1:100

Immunofluorescence: 1:100~1:500

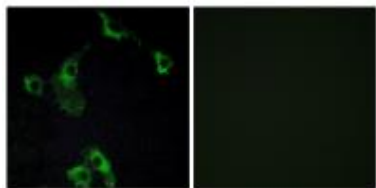
Images



Western blot analysis of extracts from RAW264.7 cells and HT-29 cells, using CIDEB antibody #34263.



Immunohistochemistry analysis of paraffin-embedded human cervix carcinoma tissue using CIDEB antibody #34263.



Immunofluorescence analysis of COS-7 cells, using CIDEB antibody #34263.

Background

Activates apoptosis.

Lugovskoy A.A., Cell 99:747-755(1999).

Inohara N., EMBO J. 17:2526-2533(1998).

Ota T., Nat. Genet. 36:40-45(2004).

Note: This product is for in vitro research use only and is not intended for use in humans or animals.