

BCLW Antibody

Catalog No: #34262



Package Size: #34262-1 50ul #34262-2 100ul

Orders: order@signalwayantibody.comSupport: tech@signalwayantibody.com

Description

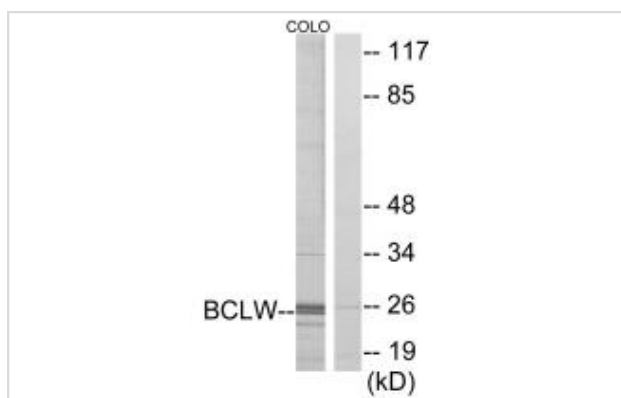
Product Name	BCLW Antibody
Host Species	Rabbit
Clonality	Polyclonal
Purification	The antibody was affinity-purified from rabbit antiserum by affinity-chromatography using epitope-specific immunogen.
Applications	WB IF
Species Reactivity	Hu Ms Rt
Specificity	The antibody detects endogenous levels of total BCLW protein.
Immunogen Type	Peptide
Immunogen Description	Synthesized peptide derived from internal of human BCLW.
Target Name	BCLW
Other Names	Apoptosis regulator Bcl-W; Bcl-2-like 2 protein; BCL2L2; BCLW; KIAA0271
Accession No.	Swiss-Prot: Q92843NCBI Gene ID: 599
SDS-PAGE MW	25kd
Concentration	1.0mg/ml
Formulation	Rabbit IgG in phosphate buffered saline (without Mg ²⁺ and Ca ²⁺), pH 7.4, 150mM NaCl, 0.02% sodium azide and 50% glycerol.
Storage	Store at -20°C

Application Details

Western blotting: 1:500~1:3000

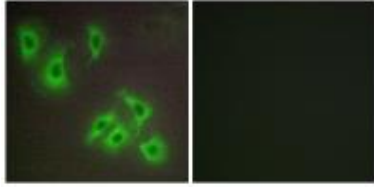
Immunofluorescence: 1:100~1:500

Images



Western blot analysis of extracts from COLO cells, using BCLW antibody #34262.

Immunofluorescence analysis of HepG2 cells, using BCLW antibody #34262.



Background

Promotes cell survival. Blocks dexamethasone-induced apoptosis. Mediates survival of postmitotic Sertoli cells by suppressing death-promoting activity of BAX.

Gibson L., *Oncogene* 13:665-675(1996).

Nagase T., *DNA Res.* 3:321-329(1996).

O'Reilly L.A., *Cell Death Differ.* 8:486-494(2001).

Note: This product is for in vitro research use only and is not intended for use in humans or animals.